

2731ELUA-70

EL CAMINO



1970

August 25, 1969

EL CAMINO

OPTIONS & ACCESSORIES WHEN INSTALLED BY CHEVROLET (Cont'd)

Description	Option Number	Dealer Net	Factory D & H	List Price	Mfr's Suggested Retail Delivered Price
Glass, Soft-Ray Tinted: All windows	A01				35.55
Windsheid only	A02				33.70
Head Restraints: (Driver and passenger)					
With Strato-bucket seats	A81				53.80
With full-width bench seat	A82				43.05
Horn, Tri-Volume: Custom and SS 396 models only	U03				14.00
Instrumentation, Special: Models 13680 & 13880 only. Includes clock, tachometer, ammeter, temperature and oil pressure gauges.	U14				96.85
Lighting, Auxiliary: includes ashtray, courtesy and underhood lights. Custom and SS 396 El Camino only.	Z19				8.65
Models 13380 and 13480 only; also includes glove compartment light	Z19				11.30
Paint, Exterior: Solid colors					N.C.
Radiator, Heavy-Duty: included when air conditioning is ordered.	V01				14.00
Radio:					
Pushbutton control; front antenna	U63				62.45
AM-FM pushbutton control; front antenna	U69				136.70
Roof Cover, Vinyl: Black	C082				53.80
White	C081				53.80
Seat Cushion, Extra-Thick Foam: Models 13380 & 13480 only.	B55				7.55
Seats, Strato-Bucket: Custom and SS 396 models only	A51				113.00
Speed and Cruise Control: (Cruise-Master) V8 models only. Available only when automatic transmission is ordered.	K30				53.80
Speed Warning Indicator	U15				10.80
Steering Wheel, Comfortilt: Seven-position; available only when automatic or floor-mounted transmission is ordered.	N33				43.05
Steering Wheel, Deluxe: Models 13380 & 13480 only.	N30				4.35
Steering Wheel, Sports-Styled: Wood-grained plastic rim	N34				32.30
Striping, Accent: SS 396 models only.	D96				30.15
Suspension, Special Front & Rear:					
Includes special front springs and 2700-lb-capacity rear springs.	F40				4.85
Ventilation, HD Closed Engine Positive: Available only when std or 155-hp or 275-hp engine is ordered.	KD5				6.50
Wheel Covers: Four, bright metal	P01				21.55
Wheel Covers, Mag-Style	N96				75.35
Wheel Covers, Mag-Spoke	PA2				75.35
Wheel Covers, Simulated Wire	N95				75.35
Wheels, Rally: includes special wheel, hub cap and trim ring.	Z17				32.30
Windsheid Wipers, Concealed: Standard on Custom and SS 396 models. Includes articulated left side blade.	C24				19.40

FACTORY INSTALLED REGULAR PRODUCTION TUBELESS TIRES

Replaces (5) 7.35-14/2-Ply (4-ply rating) Original Equipment Blackwall					
(5) 7.35-14/2-Ply (4-ply rating) Original Equipment Whitewall					32.00
(5) 7.75-14/2-Ply (4-ply rating) Original Equipment Blackwall					14.90
(5) 7.75-14/2-Ply (4-ply rating) Original Equipment Whitewall					46.75
(5) F70-14/2-Ply (4-ply rating) Special Red Stripe					70.70
(5) F70-14/2-Ply (4-ply rating) Special White Stripe					70.70
Replaces (5) 7.75-14/2-Ply (4-ply rating) Original Equipment Blackwall					
<i>Which are included with optional 325-hp 327-cu-in engine</i>					
(5) 7.75-14/2-Ply (4-ply rating) Original Equipment Whitewall					31.90
(5) F70-14/2-Ply (4-ply rating) Special Red Stripe					55.85
(5) F70-14/2-Ply (4-ply rating) Special White Stripe					55.85
Replaces (5) G70-14/2-Ply (4-ply rating) Special Red Stripe (El Camino SS 396 model)					
(5) G70-14/2-Ply (4-ply rating) Special White Stripe	PX9	N.C.	N.C.	N.C.	N.C.

* State and local taxes not included.

TRANSMISSION SHIFT AND FLOOR CONSOLE AVAILABILITY

ENGINE	TRANSMISSION	STANDARD SHIFT-LEVER LOCATION	RPO D55 FLOOR CONSOLE
140-hp Turbo-Thrift 230	3-Speed Std	Column	Not Available
	Special 3-Speed RPO M13	Floor With Boot	Console
155-hp Turbo-Thrift 250	Overdrive RPO M10	Column	Not Available
	4-Speed RPO M20 (V8 Only)	Floor With Boot	Console
200-hp Turbo-Fire 307	Powerglide RPO M35	Column	Console With Floor Shift
	3-Speed Std (250-hp & 275-hp Only)	Column	Not Available
250-hp Turbo-Fire 327	Special 3-Speed RPO M13	Floor With Boot	Console
275-hp Turbo-Fire 327	4-Speed RPO M20	Floor With Boot	Console
325-hp Turbo-Fire 327	4-Speed C.R. RPO M21 (325-hp Only)	Floor With Boot	Console
	Powerglide RPO M35 (250-hp & 275-hp Only)	Column	Console With Floor Shift
325-hp Turbo-Jet 396	Special 3-Speed	Floor With Boot	Console
	4-Speed RPO M20	Floor With Boot	Console
350-hp Turbo-Jet 396	4-Speed C.R. RPO M21 (350-hp & 375-hp Only)	Floor With Boot	Console
	HD 4-Speed C.R. RPO M22 (375-hp Only)	Floor With Boot	Console
375-hp Turbo-Jet 396	Powerglide RPO M35	Column	Console With Floor Shift
	Turbo Hydra-Matic RPO M40	Column	Console With Floor Shift

EL CAMINO POWER TEAMS (STANDARD ENGINES)

Engine, Transmission and Rear Axle Combinations

ENGINES		TRANSMISSION Std or Optional	REAR AXLE RATIOS*							
Option Number	Description		Without Air Conditioning				With Air Conditioning			
			Std	Optional			Std	Optional		
	Econ	Perf		Spec		Econ		Perf	Spec	
Standard Six-Cylinder on Models 13380-13580	140-hp Turbo-Thrift 230 6-Cylinder 230-cu-in displacement Single-barrel carburetor 8.5:1 compression ratio Hydraulic valve lifters Single exhaust	3-Speed—Std	3.36	3.08	3.55	3.70	3.36	—	3.55	3.70
		Special 3-Speed—M13	3.36	3.08	3.55	3.70	3.36	—	3.55	3.70
		Powerglide—M35	3.36	3.08	3.55	3.70	3.36	—	3.55	3.70
		Overdrive—M10	3.70	—	—	—	3.70	—	—	—
Standard Eight-Cylinder on Models 13480-13680	200-hp Turbo-Fire 307 8-Cylinder 307-cu-in displacement 2-barrel carburetor 9.00:1 compression ratio Hydraulic valve lifters Single exhaust	3-Speed—Std	3.08	2.73	3.36	3.55 or 3.70	3.36	—	3.55	3.70
		Special 3-Speed—M13	3.08	2.73	3.36	3.55 or 3.70	3.36	—	3.55	3.70
		4-Speed Wide-Range—M20	3.08	2.73	3.36	3.55 or 3.70	3.36	—	3.55	3.70
		Powerglide—M35	3.08	2.73	3.36	3.55 or 3.70	3.36	—	3.55	3.70
		Overdrive—M10	3.70	—	—	—	3.70	—	—	—
Standard Eight-Cylinder on Model 13880	325-hp Turbo-Jet 396 8-Cylinder 396-cu-in displacement Regular camshaft 4-barrel carburetor 10.25:1 compression ratio Dual exhaust	Special 3-Speed—Std	3.31	3.07	3.55	3.73 or 4.10	3.07	—	—	—
		4-Speed Wide-Range—M20	3.31	3.07	3.55	3.73 or 4.10	3.07	—	—	—
		Powerglide—M35	3.07	2.73	3.31	3.55 or 3.73 or 4.10	3.07	—	—	—
		Turbo Hydra-Matic—M40	2.73	—	3.07	3.31	3.07	—	—	—

* All ratios available as Positraction. (4.10:1, 4.56:1 and 4.88:1 available as Positraction only.)

EL CAMINO POWER TEAMS (OPTIONAL ENGINES)

Engine, Transmission and Rear Axle Combinations

ENGINES		TRANSMISSION Std or Optional	REAR AXLE RATIOS*							
			Without Air Conditioning				With Air Conditioning			
			Std	Optional			Std	Optional		
Econ	Perf	Spec		Econ	Perf	Spec				
L22 on Models 133-13580	155-hp Turbo-Thrift 250 6-cylinder 250-cu-in displacement Single-barrel carburetor 8.5:1 compression ratio Hydraulic valve lifters Single exhaust	3-Speed—Std	3.36	3.08	3.55	3.70	3.36	—	3.55	3.70
		Special 3-Speed—M13	3.36	3.08	3.55	3.70	3.36	—	3.55	3.70
		Powerglide—M35	3.36	3.08	3.55	3.70	3.36	—	3.55	3.70
		Overdrive—M10	3.70	—	—	—	3.70	—	—	—
L73 on Models 134-13680	250-hp Turbo-Fire 327 8-Cylinder 327-cu-in displacement Regular camshaft 4-barrel carburetor 8.75:1 compression ratio Hydraulic valve lifters Single exhaust	3-Speed—Std	3.08	2.73	3.36	3.55 or 3.70	3.36	—	3.55	3.70
		Special 3-Speed—M13	3.08	2.73	3.36	3.55 or 3.70	3.36	—	3.55	3.70
		4-Speed Wide-Range—M20	3.08	2.73	3.36	3.55 or 3.70	3.36	—	3.55	3.70
		Powerglide—M35	3.08	2.73	3.36	3.55 or 3.70	3.36	—	3.55	3.70
L30 on Models 134-13680	275-hp Turbo-Fire 327 8-Cylinder 327-cu-in displacement Regular camshaft 4-barrel carburetor 10.0:1 compression ratio Hydraulic valve lifters Single exhaust	3-Speed—Std	3.08	2.73	3.36	3.55 or 3.70	3.36	—	3.55	3.70
		Special 3-Speed—M13	3.08	2.73	3.36	3.55 or 3.70	3.36	—	3.55	3.70
		Powerglide—M35	3.08	2.73	3.36	3.55 or 3.70	3.36	—	3.55	3.70
		4-Speed Wide-Range—M20	3.07	2.73	3.31	3.55 or 3.73	3.31	—	3.55	3.73
L79 on Models 134-13680	325-hp Turbo-Fire 327 8-Cylinder 327-cu-in displacement High-lift camshaft 4-barrel carburetor 11.0:1 compression ratio Hydraulic valve lifters Dual exhaust	Special 3-Speed—M13	3.31	3.07	3.55	3.73	3.31	—	3.55	3.73
		4-Speed Wide-Range—M20	3.31	3.07	3.55	3.73	3.31	—	3.55	3.73
		4-Speed Close-Ratio—M21	3.31	3.07	3.55	3.73 4.10 4.56 4.88	3.31	—	3.55	3.73
L34 on Model 13880	350-hp Turbo-Jet 396 8-Cylinder 396-cu-in displacement High-lift camshaft 4-barrel carburetor 10.25:1 compression ratio Hydraulic valve lifters Dual exhaust	Special 3-Speed—Std	3.55	3.31	3.73	4.10	3.07	—	—	—
		4-Speed Wide-Range—M20	3.55	3.31	3.73	4.10	3.07	—	—	—
		4-Speed Close-Ratio—M21	3.55	3.31	3.73	3.07 4.10 4.56 4.88	3.07	—	—	—
		Powerglide—M35	3.31	3.07	3.55	3.73 or 4.10	3.07	—	—	—
		Turbo Hydra-Matic—M40	3.07	2.73	3.31	3.73	3.07	—	—	—
L78 on Model 13880	375-hp Turbo-Jet 396 8-Cylinder 396-cu-in displacement Special camshaft 4-barrel carburetor 11.0:1 compression ratio Mechanical valve lifters Temperature-controlled radiator fan Dual exhaust	Special 3-Speed—Std	3.55	3.31	3.73	4.10	Air Conditioning Not Available			
		4-Speed Wide-Range—M20	3.55	3.31	3.73	4.10				
		4-Speed Close-Ratio—M21	3.55	3.31	3.73	3.07 4.10 4.56 4.88				
		4-Speed HD Close-Ratio—M22	3.55	3.31	3.73	3.07 4.10 4.56 4.88				

* All ratios available as Positraction. (4.10:1, 4.56:1 and 4.88:1 available as Positraction only.)

EL CAMINO

PLEASE NOTE: The exterior and interior combinations shown in the chart below have been approved as the only combinations that would be attractive to the average customer. Orders for combinations other than those approved will be returned to dealers for written confirmation unless the original order carries a notation in the special instruction section to the effect that the color and trim selection has been checked and is definitely desired.

INVOICE INTERIOR TRIM IDENTIFICATION			
Black	760	765	766
Blue	759	773	774
Saddle	758	782	783

INTERIOR SELECTION CHART

TYPE OF SEAT	Material Extra Cost	INTERIOR TRIM COLOR AVAILABILITY		
		Black	Blue	Saddle

CUSTOM EL CAMINO & EL CAMINO SS 396

Full-Width Bench	Vinyl	No	E	B	J
Optional Strato-Bucket (RPO A51)	Vinyl	Yes	E	B	J

EL CAMINO

Full-Width Bench	Vinyl	No	E	B	J
-------------------------	--------------	-----------	---	---	---

EXTERIOR SELECTION CHART

INTERIOR TRIM	CODE	EXTERIOR COLOR AVAILABILITY									
BLACK	E	ALL SOLID COLORS									
BLUE	B	AA	CC	DD	EE	FF	LL	TT			
SADDLE	J	AA	CC	GG	HH	NN	PP	TT	VV	YY	

EXTERIOR COLOR	EXTERIOR CODE	EXTERIOR COLOR	EXTERIOR CODE
TUXEDO BLACK	AA	TEAL BLUE (Dk)	LL
ERMINE WHITE	CC	CORDOVAN MAROON	NN
GROTTO BLUE (Med)	DD	SEAFROST GREEN	PP
FATHOM BLUE (Dk)	EE	MATADOR RED	RR
ISLAND TEAL (Med)	FF	PALOMINO IVORY	TT
ASH GOLD	GG	SEQUOIA GREEN (Dk)	VV
GRECIAN GREEN (Med)	HH	BUTTERNUT YELLOW	YY
RIPOLI TURQUOISE	KK		

EL CAMINO COLOR COMBINATIONS

INTERIOR AND EXTERIOR

PLEASE NOTE: The exterior and interior combinations for each color paint shown in the chart below have been established as the combinations that would be attractive to the average customer. Orders for non-recommended solid color exterior and interior trim combinations may be submitted, provided the original order carries a notation in the special instruction section. This notation should state that the color and trim selection has been verified and is definitely desired. This procedure does not apply to orders that specify a vinyl roof cover, as combinations shown are the only combinations that have been approved.

VINYL ROOF	EXTERIOR COLOR AVAILABILITY
BLACK	BB All Exterior Colors.
BLUE (DARK)	CC Astro Blue, Fathom Blue, Cortez Silver or Classic White Exterior Colors Only.
GOLD (DARK)	HH Champagne Gold, Autumn Gold or Gobi Beige Exterior Colors Only.
GREEN (DARK)	GG Green Mist, Forest Green or Classic White Exterior Colors Only.
WHITE	AA All Exterior Colors except Shadow Gray.

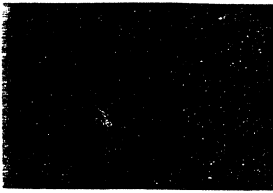
	Type of Seat	INTERIOR TRIM		
		Black	Blue	Saddle
		Vinyl	Vinyl	Vinyl
CUSTOM EL CAMINO	Std Bench	755	764	770
	Strato-Bucket (RPO A51)	756	765	771
EL CAMINO	Std Bench	762	761	773

EXTERIOR COLOR	CODE		INTERIOR TRIM COLOR		
	Lower	Upper	Black	Blue (Medium)	Saddle
SOLID ONLY					
Tuxedo Black	19	19	X	X	X
Astro Blue	25	25	X	X	
Fathom Blue	28	28	X	X	
Shadow Gray	17	17	X	X	X
Cortez Silver	14	14	X	X	X
Champagne Gold	55	55	X		X
Autumn Gold	58	58	X		X
Desert Sand	63	63	X		X
Green Mist	45	45	X		X
Forest Green	48	48	X		X
Cranberry Red	75	75	X		X
Black Cherry	78	78	X		X
Misty Turquoise	34	34	X		
Classic White	10	10	X	X	X
Gobi Beige	50	50	X		X

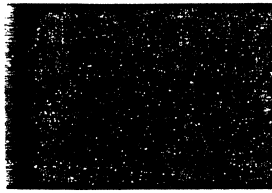
STANDARD AND CUSTOM SEAT BELT AND SHOULDER BELT COLORS

INTERIOR TRIM	STANDARD	CUSTOM DELUXE
	Seat Belt & Shoulder Belt Buckles are Colored Plastic	Seat Belt & Shoulder Belt Buckles are Brushed Metal
Black	Black	Black
Blue	Dark Blue	Dark Blue
Saddle	Black	Medium Saddle

EL CAMINO COLORS



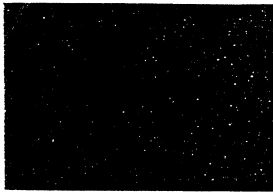
Tuxedo Black
Option Code 19



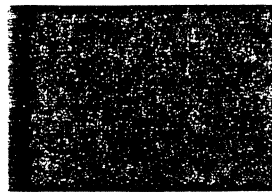
Astro Blue
Option Code 25



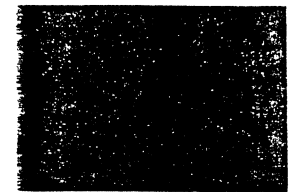
Fathom Blue
Option Code 28



Shadow Gray
Option Code 17



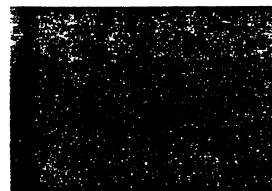
Cortez Silver
Option Code 14



Champagne Gold
Option Code 55



Autumn Gold
Option Code 58



Desert Sand
Option Code 63



Green Mist
Option Code 45



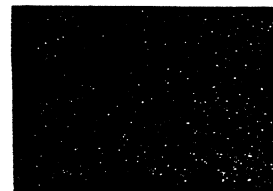
Forest Green
Option Code 48



Cranberry Red
Option Code 75



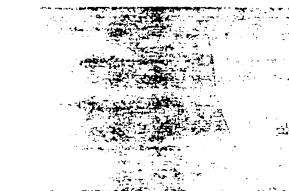
Black Cherry
Option Code 78



Misty Turquoise
Option Code 34

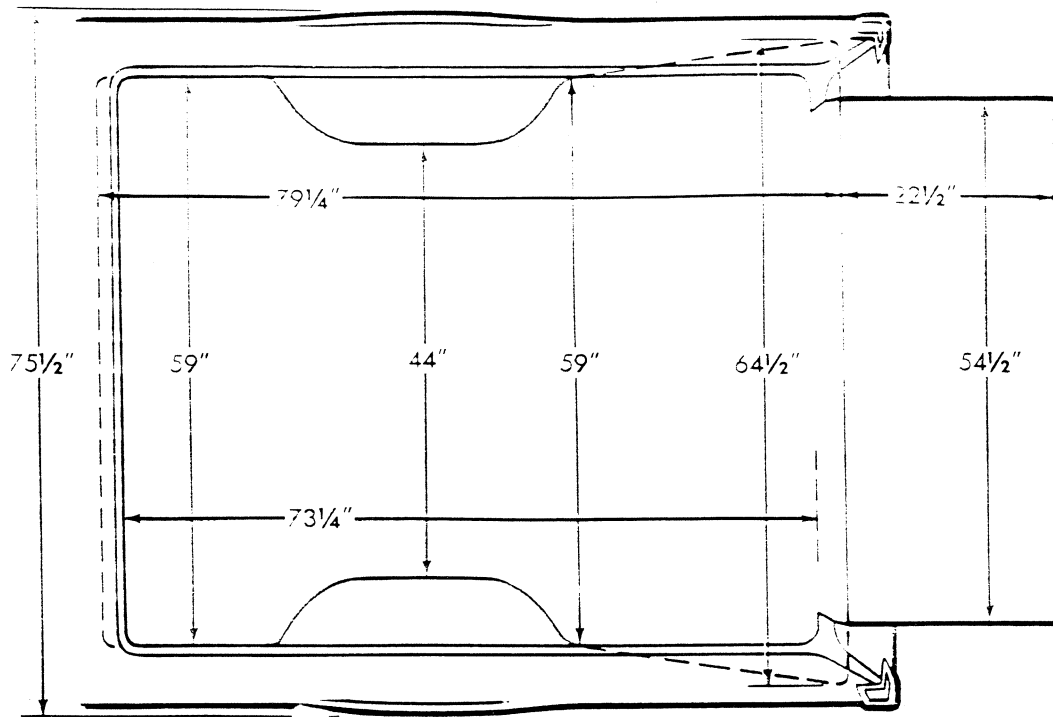


Classic White
Option Code 10



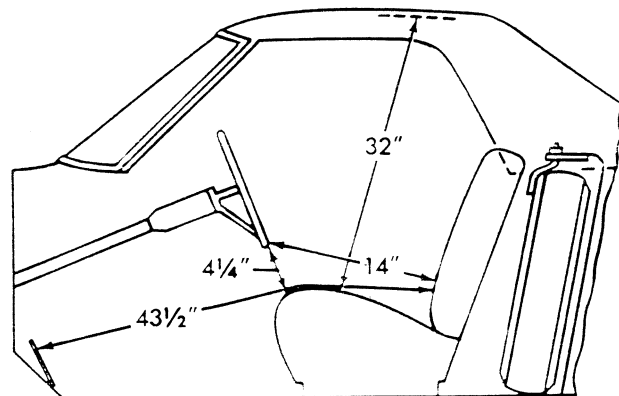
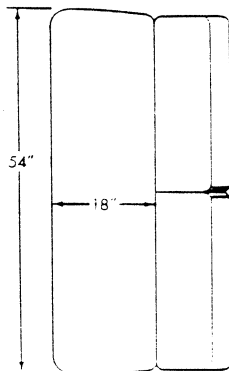
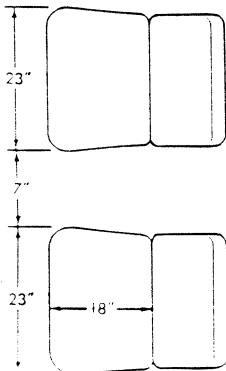
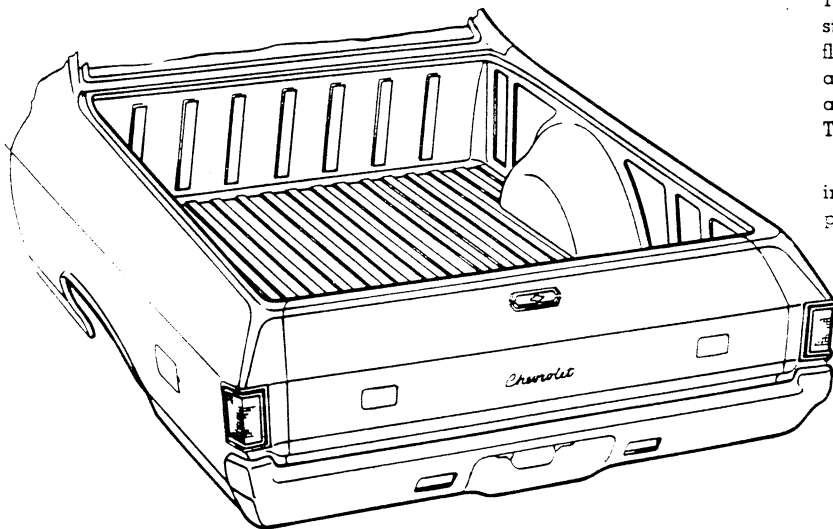
Gobi Beige
Option Code 50

DIMENSIONS



The El Camino pickup box features double-wall construction on the side panels and a ribbed all-steel floor. The tailgate, featuring easy, one-hand operation, also has double-wall construction and forms a continuation of the ribbed floor when lowered. The pickup box has a capacity of 38 1/2 cubic feet.

All El Camino models have a bright metal molding at the top of the box and tailgate to prevent paint chipping when loading or unloading.



GENERAL

MODEL IDENTIFICATION	2
SERIAL NUMBERS AND IDENTIFICATION	3
EXTERIOR EQUIPMENT	4-8
INTERIOR EQUIPMENT	9-14
EXTRA COST EQUIPMENT	15-17
AIR CONDITIONING EQUIPMENT	18

MODEL IDENTIFICATION

● STANDARD

MODEL 133-13469 4-DOOR SEDAN, 6-PASSENGER
MODEL 133-13437 2-DOOR SPORT COUPE, 5-PASSENGER

MALIBU

SERIES 135-13600

MODEL 135-13669 4-DOOR SEDAN, 6-PASSENGER
MODEL 135-13639 4-DOOR SPORT SEDAN, 6-PASSENGER
MODEL 135-13637 2-DOOR SPORT COUPE, 5-PASSENGER
MODEL 135-13667 2-DOOR CONVERTIBLE, 5-PASSENGER
MODEL 135-13680 2-DOOR SEDAN PICKUP, 3-PASSENGER

CHEVELLE STATION WAGONS

MODEL 131-13236 NOMAD 4-DOOR STATION WAGON, 2-SEAT
MODEL 133-13436 GREENBRIER 4-DOOR STATION WAGON, 2-SEAT
MODEL 13446 GREENBRIER 4-DR STATION WAGON, 3-SEAT
MODEL 135-13636 CONCOURS 4-DR STATION WAGON, 2-SEAT
MODEL 13646 CONCOURS 4-DR STATION WAGON, 3-SEAT
MODEL 13836 CONCOURS ESTATE 4-DR STATION WAGON, 2-SEAT
MODEL 13846 CONCOURS ESTATE 4-DR STATION WAGON, 3-SEAT

SERIAL NUMBERS AND IDENTIFICATION

ONLY BASIC DESIGNATIONS SHOWN

VEHICLE SERIAL NUMBER

6-Cylinder Example:

Model	Model Year	Assembly Plant (Lakewood)	Unit Number (1st unit)
13369	1970 0	A	100001

Thus: The 1st model built at Lakewood would be serial number 133690A100001

8-Cylinder Example:

Model	Model Year	Assembly Plant (Lakewood)	Unit Number (1st unit)
13469	1970 0	A	100001

Thus: The 1st model built at Lakewood would be serial number 134690A100001

ASSEMBLY PLANTS

A - Lakewood-GMAD	K - Leeds-GMAD
B - Baltimore-GMAD	L - Van Nuys-GMAD
F - Flint	

Canadian Plant
No. "I" Oshawa

Starting unit number 100001 and up at each assembly plant regardless of series
Location Stamped on plate attached to top left hand of instrument panel

TRANSMISSION IDENTIFICATION

Example: RRM0E01D

Type	Source	Model Year	Production ^o
Designation	Designation	1970	Month & Date
RR	M (Muncie)	0	E01D*

RR	3-Speed	L-6 & V-8 engines	M - Muncie
WC	4-Speed	V-8 engine	P - Muncie
UD	Powerglide	L-6 engine	C - Cleveland
VO	Powerglide	V-8 engine	T - Toledo
GN	Turbo Hydra-Matic	L-6 engine	B - Cleveland
GS	Turbo Hydra-Matic	V-8 engine	Y - Toledo
CE	Turbo Hydra-Matic	V-8 engine	-- Ypsilanti

Location:
3-Speed stamped on left side on boss below side cover.
4-Speed Stamped on the top right side of the case.
Powerglide & Turbo Hydra-Matic (Chevrolet) Stamped on right hand side of pan.
Turbo Hydra-Matic Nameplate tag on right hand side of the case.

e-Month: E denotes May; (see below) 01 denotes 1st day
Alpha Characters used in identifying the calendar Month:

A - January	D - April	K - July	R - October
B - February	E - May	M - August	S - November
C - March	H - June	P - September	T - December

*-The letter "D" or "N" following the date numeral indicates day or night shift.

ENGINE IDENTIFICATION

Example: F1210BE

Source	Production ^o	Type
Designation	Month & Date	Designation
F (Flint)	1210	CCG

Turbo-Thrift 250, 250 Cubic Inch L-6, Base Engine

- CCG - Regular engine, 3-speed
- Regular engine, Powerglide
- Regular engine, Turbo Hydra-Matic (Chevrolet)

Turbo-Fire 307, 307 Cubic Inch V-8, Base Engine

- CNC - Regular engine, 3-speed
- CND - Regular engine, 4-speed
- CNE - Regular engine, Powerglide
- CNF - Regular engine, Turbo Hydra-Matic (Chevrolet)

Turbo-Fire 350, 350 Cubic Inch V-8 (RPO-L48)

- CNJ - Optional engine, 3-speed, 4-bbl. carb.
- CNK - Optional engine, Powerglide, 4-bbl. carb.
- CRE - Optional engine, Turbo Hydra-Matic (Chevrolet)

Turbo-Fire 350, 350 Cubic Inch V-8 (RPO-L65)

- CNI - Optional engine, 3-speed, 2-bbl. carb.
- CNM - Optional engine, Powerglide, 2-bbl. carb.
- CNN - Optional engine, Turbo Hydra-Matic (Chevrolet)

Turbo-Jet 396, 402 Cubic Inch V-8 (RPO-L34)

- CTX - Optional engine, 3-speed, 4 bbl. carb.
- CTW - Optional engine, Turbo Hydra-Matic, 4-bbl. carb.

Turbo-Jet 400, 402 Cubic Inch V-8 (RPO-LS3)

- CKR - Optional engine, 3-speed, 4-bbl. carb.
- Optional engine, Turbo Hydra-Matic, 4-bbl. carb.

Turbo-Jet 454, 454 Cubic Inch V-8 (RPO-LS5)

- CRN - Optional engine, 3-speed, 4-bbl. carb.
- CRQ - Optional engine, Turbo Hydra-Matic, 4-bbl. carb.

Location:

- 6-cylinder engine Stamped on pad on right side of cylinder block to rear of distributor
- 8-cylinder engine Stamped on pad at front right side of cylinder block

* - Month: December, 12; 10th day of December 10.

REAR AXLE IDENTIFICATION

Location, Identification Number:

Bottom left or right of axle tube adjacent to carrier housing.

See Power Train Section for additional information.

EXTERIOR EQUIPMENT

STANDARD AND OPTIONAL APPEARANCE EQUIPMENT EXTERIOR

FRONT	● STANDARD	MALIBU	SUPER SPORT OPTION
Radiator Grille "Chevelle" Nameplate-Block	X	X	X
Radiator Grille Bow Tie Emblem		X	
Bright Windshield Reveal Molding with Wide Lower Section		X	X
Bright Windshield Reveal Molding with Narrow Lower Section	X		
Bright Hood and Fender Rear Molding	X	X	X
Concealed Windshield Wipers with Articulated Left Blade		X	X
Bumper-Mounted Parking Lamps with Amber Lens	X	X	
Bright Radiator Grille Outline Moldings with Bright Vertical Center Bars		X	
Bright Radiator Grille Outline Moldings			X
Plastic Radiator Grille; Body Color Center Bar and Argent Grille Openings	X	X	
Dual Headlamps	X	X	X
Bright Headlamp Bezels	X	X	X
Body Color Bumper Filler Panel	X	X	X
Radiator Grille "SS" Emblem			X
Bumper-Mounted Parking Lamps with White Lens and Amber Bulb			X
Special Hood with Raised Center Area (Non-Functional)			X
Plastic Radiator Grille; Body Color Center Bar and Black Grille Openings			X
Bright Windshield Pillar Molding		67	67

SIDE

Front Fender Nameplate		"Malibu" (Block)	"SS 396" or "SS 454"
Bright Ventipane Frame	69	Except 37-67	
Rectangular Outside LH Rear View Mirror	X	X	X
Bright Wide Rocker Molding		X	
Bright Drip Molding		Except 67	37
Bright Door and Quarter Belt Molding, and Fender Peak Molding		X	
Hub Caps	X	X	
Front Marker Lamp with Amber Lens	X	X	X
Rear Marker Lamp with Red Lens and Body Color Bezel	X	X	X
Front Fender V-8 Engine Displacement in Block Numerals (White Paint Filled)	X	X	
Bright Weather Strip Retainers	37	37-39	37
Bright Wheel Opening Molding			X
14 x 7 Sport Wheel with Trim Ring			X
F7-14-4 Blackwall Tires with manufacturer's name, Trademark and Size in White Letter			X

EXTERIOR EQUIPMENT

STANDARD AND OPTIONAL APPEARANCE EQUIPMENT EXTERIOR

REAR	● STANDARD	MALIBU	SUPER SPORT OPTION
Deck Lid Nameplate "Chevelle by Chevrolet" - Script and Block	X	X	X
Bright Rear Window Reveal Molding	X	Except 67	37
Bumper-Mounted Tail Lamps with Decorative Lens Treatment and Argent Cuff		X	X
Bumper-Mounted Tail Lamps with Plain Lens	X		
Backup Lamp Integral with Tail Lamp	X	X	X
Bright Rear Belt Molding		67	67
Oval Tail Pipe Extensions			X
Black Polyvinyl Rear Bumper Applique with Bright Border and Embossed "SS"			X

EXTERIOR EQUIPMENT

STANDARD EXTERIOR EQUIPMENT STATION WAGONS

	NOMAD 13136 13236	GREENBRIER 13336 13436-46	CONCOURS 13536 13636-46	CONCOURS ESTATE 13836-46
FRONT				
Radiator Grille "Chevrolet" Nameplate	X	X	X	X
Radiator Grille Bow Tie Emblem	X	X	X	X
Bright Windshield Reveal Molding with Narrow Lower Section	X	X		
Bright Windshield Reveal Molding with Wide Lower Section			X	X
Concealed Windshield Wipers with Articulated Left Blade			X	X
Bright Hood and Fender Rear Molding	X	X	X	X
Bumper-Mounted Parking Lamps with Amber Lens	X	X	X	X
Bright Radiator Grille Outline Moldings	X	X		
Bright Radiator Grille Outline Moldings with Bright Vertical Center Bars			X	X
Plastic Radiator Grille with Body Color Center Bar and Argent Grille Openings	X	X	X	X
Dual Headlamps	X	X	X	X
Bright Headlamp Bezels	X	X	X	X
Bright Fender Extension Lower Molding			X	X
Body Color Bumper Filler Panel	X	X	X	X
SIDE				
Rear Quarter Nameplate (Script Except "Greenbrier" Which is Block)	"Nomad"	"Greenbrier"	"Concours"	"Concours Estate"
Bright Ventipane Frame	X	X	X	X
Rectangular Outside LH Rear View Mirror	X	X	X	X
Bright Thin Rocker Molding		X		
Bright Wide Rocker Molding			X	
Bright Drip Molding		X	X	X
Bright Rear Quarter Window Reveal Molding		X	X	X
Painted Rear Quarter Window Reveal Molding	X			
Body Side Upper Paint Stripe (Fender, Doors and Rear Quarter)			X	
Bright Body Side Upper and Lower Moldings with Lined Oak Covering (Fender, Doors and Rear Quarter)				X
Wood-Grain Treatment between Body Side Upper and Lower Moldings				X
Brown-Painted Rear Quarter Bumper Depression Molding				X
Brown-Painted Front Fender Bumper Depression Molding				X
Bright Wheel Opening Moldings			X	X
Hub Caps	X	X	X	X
Front Marker Lamp with Amber Lens	X	X	X	X
Front Fender Engine Displacement in Block Numerals (White-Paint Filled)	X	X	X	X
Wood-Grain Rear Quarter Crease Molding				X

**STANDARD EXTERIOR EQUIPMENT
STATION WAGONS**

REAR	NOMAD 13136 13236	GREENBRIER 13336 13436-46	CONCOURS 13536 13636-46	CONCOURS ESTATE 13836-46
Tailgate Nameplate "Chevrolet"—Script	X	X	X	X
Separate Tailgate-Mounted Backup Lamps	X	X	X	X
Bright Tailgate Window Reveal Molding	X	X	X	X
Bright Upper and Lower Tailgate Moldings with Limed Oak Covering				X
Wood-Grain Treatment Between Upper and Lower Tailgate Moldings				X
Bumper Step Well Rubber Mat	X	X	X	X
Body-To-Bumper Filler Panel with Rubber Mat		46	X	X
Body-To-Bumper Filler Panel with Black Paint	X	36		
Brown-Painted Molding Below Tail Lamp				X
Bright, Black Paint Filled Tailgate Moldings			X	

EXTERIOR EQUIPMENT

EXTERIOR EQUIPMENT EL CAMINO

	STANDARD EL CAMINO 13380-13480	CUSTOM EL CAMINO 13580-13680	SUPER SPORT OPTION
FRONT			
Grille Nameplate "Chevrolet" - Block	X	X	X
Radiator Grille "SS" Emblem			X
Bright Hood and Fender Rear Molding	X	X	X
Bright Windshield Reveal Molding with Narrow Lower Section	X		
Bright Windshield Reveal Molding with Wide Lower Section		X	X
Concealed Windshield Wipers with Articulated Left Blade		X	X
Bumper-Mounted Parking Lamp with Amber Lens	X	X	X
Radiator Grille Bow Tie Emblem	X	X	
Bright Radiator Grille Outline Moldings	X		X
Bright Radiator Grille Outline Moldings With Bright Vertical Center Bars		X	
Plastic Radiator Grille with Body-Color Center Bar and Argent Grille Openings	X	X	
Plastic Radiator Grille with Body-Color Center Bar and Black Grille Openings			X
Dual Headlamps	X	X	X
Bright Headlamp Bezels	X	X	X
Bright Fender Extension Lower Molding		X	X
Body Color Bumper Filler Panel	X	X	X
Special Hood with Raised Center Area			X
SIDE			
Front Fender Nameplate "El Camino" - Block	X	X	X
Front Fender Emblem "SS 396" or "SS 454"			X
Front Fender Engine Displacement in Block Numerals (White Paint Filled)	X	X	
Bright Ventipane Frame	X	X	X
Rectangular Outside LH Rear View Mirror	X	X	X
Bright Thin Rocker Molding	X		
Black Paint Filled, Bright Body Side Lower Molding with Silver Body Paint Below (Fender, Door and Rear Quarter)		X	
Bright Drip Molding		X	X
Bright Door Frame Scalp Molding		X	X
Bright Wheel Opening Moldings		X	X
Bright Load Compartment Belt Molding	X	X	X
Front Marker Lamp with Amber Lens	X	X	X
Hub Cap)	X	X	
14 X 7 Sport Wheel with Special Hub Cap and Trim Ring			X
White-Stripe Tires		X	
Bright Rear Quarter Peak Molding	X	X	X
REAR			
Tailgate Nameplate "Chevrolet" - Block	X	X	
Tailgate Emblem "SS 396" or "SS 454"			X
Separate Backup Lamps Mounted in Tailgate	X	X	X
Bright Rear Window Reveal Molding	X	X	X
Black Paint Filled, Bright Horizontal Tailgate Moldings with Wood-Grain Treatment Between		X	
Black Paint Filled, Bright Horizontal Tailgate Moldings with Black Paint Treatment Between			X
Bright Tailgate Belt Molding	X	X	X
Bumper-Mounted Red Reflectors	X	X	X

STANDARD AND OPTIONAL APPEARANCE EQUIPMENT INTERIOR

ROOF AND PILLARS	● STANDARD	MALIBU	SUPER SPORT OPTION
Premier Vinyl Coated Headlining—Perforated	X	Except 67	37
Trim Color Windshield and Rear Window Garnish Moldings, and Roof Rail Molding (F)	X	Except 67	37
12-Inch Prismatic Rear View Mirror with Gray Padded Edge	X	X	X
Hook-Type Rear View Mirror Support		X	X
Hookless-type Rear View Mirror Support	X		
Trim Color Plastic Rear View Mirror Support Cover	X	X	X
Padded Sunshades	X	X	X
Air Gap Windshield Pillar Garnish Moldings	X	Except 67	37
Padded Windshield Pillar Garnish Moldings		67	67
Trim Color Plastic Coat Hooks	X	Except 67	37
Bright Bezeled Center Dome Lamp	X	Except 67	37
Front Door Jamb Switches	X	X	X
Front Seat Shoulder Belt Anchor Cover (Same Color as Shoulder Belt)	X	Except 67	37
Bright Front Seat Shoulder Belt Clip Retainers	X	Except 67	37
Counterbalanced Folding Top		67	67

SEATS AND FLOOR COVERING

Front Seat Cushion with 2.00-Inch Foam Pad	X	X	X
Rear Seat Cushion with 1-Inch Foam Pad		X	X
Rear Seat Cushion with 6-oz. Cotton Pad	X		
Bright Front Seat Adjuster Handle	X	X	X
Bright Folding Front Seat Back Latch	37	37-67	X
Cloth and Vinyl Seat Cushion and Seat Back	X	Except 67	37
All-Vinyl Seat Cushion and Seat Back		67	67
Carpet Passenger Compartment Floor Covering		X	X
Rubber Mat Passenger Compartment Floor Covering	X		
Luggage Compartment Spatter Paint	X	X	X
Luggage Compartment Mat (Vinyl Coated Cotton on Latex Foam)		X	X
Front seat Head Restraints	X	X	X
Front and Rear Seat Belts	X	X	X
Front Seat Shoulder Belts	X	Except 67	37
Bench Seats	X	X	X
Trim Color Front Seat Belt Anchor Covers	X	X	X

INTERIOR EQUIPMENT

STANDARD AND OPTIONAL APPEARANCE EQUIPMENT INTERIOR

DOOR AND QUARTER PANEL	● STANDARD	MALIBU	SUPER SPORT OPTION
Front Door Padded Armrest	X	X	X
Rear Door or Quarter Panel Padded Armrest with Ash Tray	X	Except 67	37
Built-In Rear Quarter Panel Armrest and Ash Tray		67	67
Clear Plastic Window Control Handle Knobs	X	X	X
Bright Door Lock Buttons	X	X	X
All-Vinyl Door and Quarter Panel Trim	X	X	X
Series Nameplate on Door		"Malibu", 37-67 Only	"SS"

INSTRUMENT PANEL AND STEERING WHEEL

Glove Compartment Light		X	X
Heater Control Light	X	X	X
Instrument Panel Courtesy Lights	X	67	67
Temperature, Generator, Oil Pressure and Brake Warning Lights	X	X	X
Hi-Beam and Turn Signal Indicators	X	X	X
Bright Cowl Ventilation Control Knob	X	X	X
Bright Astro-Ventilation Control Knob	37	37-67	X
Windshield Wiper and Washer Switch (Slide-Type, Depress to Wash)	X	X	X
Bright Light Switch Knob with Black Accent	X	X	X
Bright Hazard Flasher Knob	X	X	X
Trim Color Turn Signal and Transmission Shift Lever Knobs	X	X	X
Steering Column Ignition Switch with Integral Steering Wheel and Transmission Lock	X	X	X
T-Handle Parking Brake Release	X	X	X
Blended Air Heater	X	X	X
Two-Speed Windshield Wiper and Washer	X	X	X
Ash Tray	X	X	X
Cigarette Lighter	X	X	X
Speedometer, Odometer and Fuel Gage	X	X	X
Instrument Panel Pad	X	X	X
Instrument Panel Astro-Ventilation Outlets (R and L)	37	37-67	X
Clock Hole Cover Plate	X	X	X
● "Molded-In" Air Conditioning Center Outlet Cover	X	X	X
Glove Compartment Door Lock	X	X	X
Steering Wheel with Shroud and Horn buttons	X	X	X
Steering Wheel Center Emblem	"Bow Tie"	"Malibu"	"SS"
Black Steering Wheel and Column			X
Trim Color Steering Wheel and Column	X	X	
Monte Carlo Instrument Panel and Cluster (Black Millgrain Surface on Cluster)			X

GLASS

Laminated Safety-Plate Glass Windshield	X	X	X
Solid Safety Plate Glass Ventpanes		39-69	
Solid Safety Plate Glass Backlight	X	Except 67	37
Solid Safety Plate Glass Door Windows	X	X	X
Solid Safety Plate Glass Rear Quarter Windows	37	37-67	X
Tempered Glass Rear Window		67	67

**STANDARD INTERIOR EQUIPMENT
STATION WAGONS**

	NOMAD 13136 13236	GREENBRIER 13336 13436-46	CONCOURS 13536 13636-46	CONCOURS ESTATE 13836-46
ROOF AND PILLARS				
Premier Vinyl Coated Headlining—Plain	X	X	X	X
Trim Color Windshield, Roof Rail and Rear Window Trim Lace	X	X	X	X
12-Inch Prismatic Rear View Mirror with Gray Padded Edge	X	X	X	X
Silver Painted Rear View Mirror Support	X	X		
Hook-Type Rear View Mirror Support			X	X
Trim Color Plastic Rear View Mirror Support Cover	X	X	X	X
Padded Sunshades	X	X	X	X
Air Gap Windshield Pillars	X	X	X	X
Trim Color Plastic Coat Hooks	X	X	X	X
Bright Bezeled Center Dome Lamp	X	X	X	X
Front Door Jamb Switches	X (a)	X	X	X
Trim Color Front Seat Shoulder Belt Anchor Cover	X	X	X	X
Bright Front Seat Shoulder Belt Clip Retainers	X	X	X	X
Additional Roof Insulation			X	X

(a) Left Door Only

SEATS AND FLOOR COVERING

Front Seat Cushion with 2.00-Inch Foam Pad	X	X	X	X
Second Seat Cushion with 6-oz. Cotton Pad	X	X		
Second Seat Cushion with 1-Inch Foam Pad			X	X
Third Seat Cushion with .75-Inch Foam Pad		46	46	46
Bright Front Seat Adjuster Handle	X	X	X	X
Bright Folding Second Seat Back Latches	X	X	X	X
Bright Folding Third Seat Back Latches		46	46	46
All-Vinyl Seat Cushion and Seat Back	X	X	X	X
Vinyl Coated Rubber Passenger Compartment Floor Covering	X	X		
Carpet Passenger Compartment Floor Covering			X	X
Front Seat Head Restraints	X	X	X	X
Front and Second Seat Seat Belts	X	X	X	X
Third Seat Seat Belts		46	46	46
Front Seat Shoulder Belts	X	X	X	X
Bench Seats (Folding Second and Third)	X	X	X	X
Trim Color Front Seat Belt Anchor Covers	X	X	X	X
Vinyl Coated Rubber Flat Load Floor Mat	X			
Textured Metal (Vinyl Painted) Load Floor	X	X	X	X
Textured Steel (Vinyl Painted) Inner Quarter Panel and Wheelhouse	X	X		
Vinyl Trim Inner Quarter Panel and Wheelhouse			X	X
Painted Load Floor Well		X	X	X
Load Floor Well Mat of Black Rubber		36	36	36
Load Floor Well Mat of Colored Vinyl Coated Rubber		46	46	46
Additional Insulation Under Load Floor and in Stowage Well				X

INTERIOR EQUIPMENT

STANDARD INTERIOR EQUIPMENT STATION WAGONS

DOOR, QUARTER PANEL AND TAILGATE	NOMAD	GREENBRIER	CONCOURS	CONCOURS
	13136 13236	13336 13436-46	13536 13636-46	ESTATE 13836-46
Front Door Padded Armrest	X	X	X	X
Rear Door Padded Armrest with Ash Tray		X	X	X
Blue-Tinted, Clear Plastic Window Control Handle Knobs	X	X	X	X
Bright Door Lock Buttons	X	X	X	X
All-Vinyl Door and Quarter Panel Trim	X	X	X	X
Manual Tailgate Window Control	36	36	36	36
Electric Tailgate Window Control		46	46	46
Third Seat Courtesy Light			46	46

INSTRUMENT PANEL AND STEERING WHEEL

Glove Compartment Light			X	X
Heater Control Light	X	X	X	X
Temperature, Generator, Oil Pressure and Brake Warning Lights	X	X	X	X
Hi-Beam and Turn Signal Indicators	X	X	X	X
Bright Cowl Ventilation Control Knob	X	X	X	X
Windshield Wiper and Washer Switch (Slide-Type, Depress to Wash)	X	X	X	X
Bright, Black Accented Instrument Panel Lighting Control Knob	X	X	X	X
Bright Hazard Flasher Knob	X	X	X	X
Trim Color Turn Signal and Transmission Shift Lever Knobs	X	X	X	X
Steering Column Ignition Switch with Integral Steering Wheel and Transmission Lock	X	X	X	X
T-Handle Parking Brake Release	X	X	X	X
Blended Air Heater	X	X	X	X
Two-Speed Windshield Wiper and Washer	X	X	X	X
Ash Tray	X	X	X	X
Cigarette Lighter	X	X	X	X
Clock Hole Cover Plate	X	X	X	X
Glove Compartment Door Lock	X	X	X	X
Trim Color Steering Wheel, with Shroud and Horn Buttons	X	X	X	X
Bow Tie Steering Wheel Center Emblem	X	X	X	X
Wood-Grain Insert in Steering Wheel Shroud				X

GLASS

Laminated Safety Plate Glass Windshield	X	X	X	X
Solid Safety Plate Glass Ventipanes	X	X	X	X
Solid Safety Plate Glass Door Windows	X	X	X	X
Solid Safety Plate Glass Rear Quarter Windows	X	X	X	X
Solid Safety Plate Glass Tailgate Window	X	X	X	X

INTERIOR EQUIPMENT EL CAMINO

	STANDARD EL CAMINO 13380-13480	CUSTOM EL CAMINO 13580-13680	SUPER SPORT OPTION
ROOF AND PILLARS			
Premier Vinyl Coated Headlining-Perforated	X	X	X
Trim Color Windshield and Rear Window Garnish Molding and Roof Rail Molding	X	X	X
12-Inch Prismatic Rear View Mirror with Gray Padded Edge	X	X	X
Silver Painted Rear View Mirror Support	X		
Hook-Type Rear View Mirror Support		X	X
Trim Color Plastic Rear View Mirror Support Cover	X	X	X
Padded Sunshades	X	X	X
Air Gap Windshield Pillars	X	X	X
Bright Bezeled Backlight Header Dome Lamp	X	X	X
Door Jamb Switch	X	X	X

SEATS AND FLOOR COVERING			
Front Seat Cushion with 2.00-inch Foam Pad	X	X	X
Bright Folding Seat Back Latches	X	X	X
Bright Seat Adjuster Handle	X	X	X
All-Vinyl Seat Cushion and Seat Back	X	X	X
Vinyl Coated Rubber Passenger Compartment Floor Covering	X		
Carpet Passenger Compartment Floor Covering		X	X
Head Restraints	X	X	X
Seat Belts	X	X	X
Shoulder Belts	X	X	X
Bench Seats	X	X	X
Front Seat Belt Anchor Covers (Belt Color)	X	X	X

DOOR AND QUARTER PANEL			
Door Padded Armrest	X	X	X
Plastic Window Control Handle Knobs	X	X	X
Bright Door Lock Buttons	X	X	X
All-Vinyl Door and Quarter Panel Trim	X	X	X
Trim Color Shoulder Belt Buckle Retainers	X	X	X
Bright Shoulder Belt Retaining Clip	X	X	X
Shoulder Belt Anchor Cover (Belt Color)	X	X	X

INTERIOR EQUIPMENT

INTERIOR EQUIPMENT EL CAMINO

INSTRUMENT PANEL AND STEERING WHEEL	STANDARD EL CAMINO 13380-13480	CUSTOM EL CAMINO 13580-13680	SUPER SPORT OPTION
Glove Compartment Light		X	X
Heater Control Light	X	X	X
Temperature, Generator, Oil Pressure and Brake Warning Lights	X	X	X
Hi-Beam and Turn Signal Indicators	X	X	X
Bright Cowl Ventilation and Astro-Ventilation Control Knobs	X	X	X
Windshield Wiper and Washer Switch (Slide-Type, Depress to Wash)	X	X	X
Bright, Black-Accented Instrument Panel Lighting Control Knob	X	X	X
Bright Hazard Flasher Knob	X	X	X
Trim Color Turn Signal and Transmission Shift Lever Knobs	X	X	X
Steering Column Ignition Switch with Integral Steering Wheel and Transmission Lock	X	X	X
T-Handle Parking Brake Release	X	X	X
Blended Air Heater	X	X	X
Two-Speed Windshield Wiper and Washer	X	X	X
Ash Tray	X	X	X
Cigarette Lighter	X	X	X
Speedometer, Odometer and Fuel Gage	X	X	X
Trim Color Instrument Panel Pad	X	X	X
Clock Hole Cover Plate	X	X	X
Glove Compartment Door Lock	X	X	X
Steering Wheel with Shroud and Horn Buttons	X	X	X
Bow Tie Steering Wheel Center Emblem	X	X	
Black Steering Wheel and Column			X
"SS" Steering Wheel Center Emblem			X
Monte Carlo Instrument Panel and Cluster (Black Millgrain Surface on Cluster)			X
Air Conditioning Center Outlet Cover Plate with Bright "Chevrolet"			X

GLASS

Laminated Safety Plate Glass Windshield	X	X	X
Solid Safety Plate Glass Ventipanes	X	X	X
Solid Safety Plate Glass Backlight	X	X	X
Solid Safety Plate Glass Door Windows	X	X	X

EXTRA COST EQUIPMENT

EQUIPMENT	RPO/ACC	MODELS
Air Conditioning		
Four-Season	C60	132-134-13600, 13836-46
GM-Chevrolet	ACC	13000
Appearance Guard Group (2)		
Door Edge Guards	B93 ACC	13000 exc. 13836-46
Twin Front and Rear Floor Mats	B37 ACC	13000
Front Bumper Guards	V31 ACC	13000
Rear Bumper Guards	V32 ACC	13000 exc. Wgn. & El Camino
Visor Vanity Mirror	D34 ACC	13000
Axes		
Positraction	G80	13000
Ratios (See Power Train Sections)		
Battery, Heavy Duty	T60	13000
Belts, Seat and Shoulder		
Deluxe Seat Belts and Front Shoulder Belts (3)	AK1	13000 exc. Conv.
Deluxe Seat Belts, Front and Rear (3)	A39	135-13667
Deluxe Shoulder Belts, Front	A85	135-13667
Deluxe Shoulder Belts, Rear	AS4	13000 exc. El Camino
Seat Belt Retractors, Front	ACC	13000
Child Safety Seat	ACC	13000
Clock, Electric (5)	U35 ACC	13000
Compass, Auto	ACC	13000
Console		
Front Compartment Floor Console	D55	135-13637-67-80
Cowl Induction Hood (6)	ZL2	13637-67-80
Cruise Control	K30 ACC	132-134-13600, 13836-46
Cylinder Heads, Aluminum	L89	13637-67-80
Deflectors		
Rain Deflectors	ACC	13000 exc. 2-Door
Tailgate Window Air Deflector	C51 ACC	13000 Wgn.
Defoggers		
Forced Air Rear Window Defogger (7)	C50 ACC	13000 exc. El Camino
Engines (See Power Train Sections)		
Exhaust Systems		
Dual Exhaust	N10	132-134-13600, 13836-46
Evaporative Emission Control (8)	NA9	13000
Fan Drive	ACC	134-13600
Fire Extinguisher		
Dry Chemical Extinguisher	ACC	13000
Recharge Kit	ACC	13000
Generator, 63-Ampere	K85	13000
Glass, Tinted		
All Windows	A01	13000
Windshield (Fleet Sales)	A02	13000
Guards		
Door Edge Guards (9)	B93 ACC	13000 exc. 13836-46
Front Bumper Guards (9)	V31 ACC	13000
Rear Bumper Guards (9)	V32 ACC	13000 exc. Wgn & El Camino

- (1) Includes 116" wheelbase Station Wagons.
- (2) Items also available as independent options.
- (3) Merchandised as YAI.
- (4) Includes rear bumper guards.
- (5) Merchandised as independent option or through ZQ2 group.
- (6) Used only with Z25 SS equipment. Includes D88 Sport Stripes.
- (7) Not available as accessory for Station Wagons, Convertible, El Camino.
- (8) California requirement.
- (9) Merchandised as independent option or through ZP5 group.

EXTRA COST EQUIPMENT

EQUIPMENT	RPO/ACC		MODELS
Heater, Engine Block	K05	ACC	13000
Highway Emergency Kit		ACC	13000
Infant Safety Carrier		ACC	13000
Instrumentation			
Instrument Panel Gauges	U14		13637-67-80
Lighting, Auxiliary (1)			
Ash Tray Light			13000
Courtesy Lights (2)			13000 exc. Conv.
Glove Compartment Light (2)			131-132-133-13400
Luggage Compartment Light (2)			13000 exc. Wgn. & El Camino
Mirror Map Light			13000
Underhood Light (2)			13000
Windshield Washer Fluid Monitor Light (2)			13000
Light Monitor System, Front and Rear	U46		13000 exc. El Camino
Liquid Tire Chain		ACC	13000 exc. Wgn. & El Camino
Locks			
Gas Cap Lock		ACC	13000
Rear Door Lock Guard		ACC	13000
Spare Wheel Lock		ACC	13000
Luggage Carriers			
Deck Lid Luggage Carrier		ACC	13000 exc. Wgn. & El Camino
Roof Luggage Carrier	V55	ACC	13000 Wgn.
Roof Luggage Carrier Cover		ACC	13000 Wgn.
Mats, Floor			
Clear Vinyl Twin Front and Rear Mats		ACC	13000
Twin Front and Rear Mats (3)	B37	ACC	13000
Mirrors			
Remote Control Outside Mirror (4)	D33		13000
Right Hand Outside Mirror		ACC	13000 exc. Wgn. & El Camino
Visor Vanity Mirror (3)	D34	ACC	13000
Model Options			
Super Sport 396	Z25		13637-67-80
Super Sport 454	Z15		13637-67-80
Molding			
Door and Window Frame Molding	B90		13000 exc. Conv., Sp. Cpe., Spt. Sed. & 135-13680
Operating Convenience Group (5)			
Electric Clock	U35	ACC	13000
Remote Control Outside Mirror	D33		13000
Forced Air Rear Window Defogger	C50	ACC	13000 exc. El Camino
Power Assists			
Automatic Seat Back Latch (6)	AQ2		13000 2-Door
Electric Door Locks	AU3		13000
Power Brakes	J50	ACC	13000
Power Front Disc Brakes	JL2		13000
Power Steering	N40		13000
Power Tailgate Window	A33		13000 2-Seat Wgn.
Power Top	C06		135-13667
Power Windows	A31		135-13600, 13836-46

- (1) Available from factory as option only.
- (2) Available as separate dealer installation.
- (3) Merchandised as independent option or through ZP5 group.
- (4) Merchandised as independent option or through ZQ2 group.
- (5) Items also available as independent options.
- (6) Used only with RPO AU3.

EXTRA COST EQUIPMENT

EQUIPMENT	RPO/ACC	MODELS
Radiator, Heavy Duty	V01	13000
Radio Equipment		
AM Radio (1)	U63 ACC	13000
AM/FM Radio (1)	U69 ACC	13000
AM/FM Stereo Radio (2)	U79	13000 exc. El Camino
Stereo Tape System with AM Radio (2)	UM1	13000 exc. El Camino
Stereo Tape Sys. with AM/FM Stereo Radio (2)	UM2	13000 exc. El Camino
Stereo Tape Player (3)	ACC	13000 exc. El Camino
Rear Speaker	U80 ACC	13000 exc. El Camino
Stereo Tape Cartridge Holder	ACC	13000 exc. El Camino
Roof Cover, Vinyl (1)	C08	13000 exc. Conv. & Wgn.
Seats		
Strato-Bucket Seat	A51	135-13637-67-80
Ski Racks		
Demountable Ski Rack*	ACC	13000
Roof Luggage Ski Rack	ACC	13000 Wgn.
Spotlight, Portable	ACC	13000
Steering Wheels		
Comfortilt	N33	13000
Cushioned Rim Steering Wheel	NK1	13000
Stripes, Sport (4)	D88	13637-67-80
Suspension		
Heavy Duty Front and Rear	F40	13000 exc. Wgn.
Special Performance Front and Rear	F41	13637-67
Tires (See Chassis Sections)		
Tissue Dispenser and Litter Container	ACC	13000
Tops		
Folding Top Colors	C05	135-13667
Trailer Equipment		
Equalizing Trailer Hitch	ACC	13000
Trailer Hitch	ACC	13000
Trailer Wiring Harness	ACC	13000
Transmissions (See Power Train Sections)		
Trim, Interior (See Interior-Exterior Color Combination Sections)		
Two-Tone Finish (See Interior-Exterior Color Combinations Sections)		
Wheel Covers		
Deluxe Wheel Covers	P02 ACC	13000
Full Wheel Covers	P01 ACC	13000
Mag-Style Wheel Covers	ACC	13000
Simulated Wire Wheel Covers	ACC	13000
Wheel Trim Ring	P06	13000
Wheels		
Rally Wheel	Z17	13000
Windshield Wiper Control, Finger Tip	CD3	135-13600, 13836-46

- (1) Concealed antenna for option; front mast for accessory.
Single front speaker for B, X; A and G without A/C.
Dual front speakers on top of instrument panel for A and G with A/C.
- (2) Dual front speakers on top of instrument panel for B, A, G.
Dual front speakers on kick panel for X.
Dual rear speakers for B, A, G, X.
- (3) With or without radio (AM or AM/FM). Two front, two rear speakers.
- (4) Used only with Z25 SS equipment.

AIR CONDITIONING

FOUR SEASON (RPO C60)

Integral air cooling and heater system. Manually controlled by two horizontal levers on instrument control panel, plus 4-speed fan switch. Upper lever (mode selector control) uses vacuum supply and electrical switches to operate mode doors and compressor. Lower lever uses bowden cable to operate temperature door. Five air outlets: 1 center, 2 side, 2 lower.

BASIC COMPONENTS

Control panel, evaporator, blower, condenser, receiver-dehydrator, refrigerant (freon) tank, air intake assembly and duct assembly for both systems.

EQUIPMENT (Used in addition to or in place of base equipment)

CHASSIS

Front and Rear Springs Heavy duty
Rear Axle Ratio - Refer to Power Trains Section

POWER TRAINS

Fan Blade 7 blade
Fan Clutch Thermomodulated fluid coupling
Crankshaft Pulley Dual
Water Pump & Fan Pulley Single
Compressor & Crankshaft Belt One*
Generator 63 Ampere
Radiator Heavy duty

CUSTOM AIR CONDITIONING (ACCESSORY)

Air cooling unit dealer-installed beneath instrument panel. Manually controlled by two knobs: Upper knob for cool air volume, with 3-speed twin centrifugal blower; lower knob for cool/warm temperature control. Two front grille louver outlets, two round side outlets.

BASIC COMPONENTS

Evaporator and blower, compressor, condenser, receiver-dehydrator.

EQUIPMENT

It is recommended that heavy duty cooling equipment be used on all vehicles for securing maximum air conditioning performance.

CHASSIS

FRAME AND FRONT SUSPENSION	2-3
STEERING, DRIVELINE, WHEELS AND TIRES	4
REAR AXLE AND SUSPENSION	5-6
BRAKES	7
BULBS AND LAMPS	8
FUSES AND CIRCUIT BREAKERS	9

FRAME AND FRONT SUSPENSION

FRAME

Description All welded perimeter frame with front crossmember, rear axle upper control arm crossmember, and rear crossmember. Center sections except convertible and sedan pickup are "C" shaped; convertible and sedan pickup have welded box construction members. Rear axle kick-up box welded construction. Rear of kickup "C" shaped. Body Mounting: Convertible - 12 biscuits; station wagon, sedan pickup-8 biscuits +4 cushions; balance - 8 biscuits +2 cushions

Wheel travel (Design)	
Total	7.92
Jounce	3.92
Rebound	4.00
Wheel to spring, travel ratio	1.86

FRONT SUSPENSION

Description Independent, SLA type with coil springs & concentric shock absorbers; and spherical joint steering knuckle, pivots for each wheel.

CONTROL ARMS

Description Stamped A-frame with pre-loaded, steel-encased rubber bushings at pivot.

STEERING KNUCKLES

Description Forged steel with integral brake cylinder mounting, and detachable steering knuckle arm

Spindle diameters	
Inner bearing	1.2493-1.2498
Outer bearing	.7493-.7498
Spindle thread size	3/4-20 NEF-3 (modified)
Wheel bearing	
Type	Taper roller
Number	Two per spindle

SPHERICAL JOINTS

Type	Ball studs, upper self-adjusting for wear
Bearing surfaces	
Upper	To be provided
Lower	One bearing; steel

SHOCK ABSORBERS

Type	Direct, double-acting, hydraulic
Piston diameter	1.00

STABILIZER BAR

Type	Link
Material	HR steel
Diameter	0.937

FRONT WHEEL ALIGNMENT (Curb)

Camber	0° to P1°
Caster	
All SS 396 and other sedan pickup models	.N1° to 0°
Balance of models	.N1-1/2° to N1/2°
Toe (Total)	1/8 in. to 1/4 in., toe-in
Steering axis inclination	7-3/4° to 8-3/4°

GENERAL SUSPENSION PROVISIONS

Car leveling	Front stabilizer bar
Anti-dive control	Angle of front upper control arm
Anti-squat control	Rear suspension geometry

FRAME AND FRONT SUSPENSION

FRONT SPRINGS

Selected from a family of springs by Electronic Data Processing which identifies the correct spring for the weight of the vehicle including optional equipment ordered by the customer.

FRONT SPRING SPECIFICATIONS

Part Number	Assembly Code	Cut-Off Length	Wire Dia.	Total Coils	Deflection Rate (lbs per inch)	HEIGHTS	
						Free	Working (In. @ lbs.)
3952802	AF	133.95	.583	10.12	250	17.17	11.7 @ 1360
3952803	AH	134.05	.583	10.12	250	17.45	11.7 @ 1430
3952804	AI	143.75	.597	10.82	250	17.73	11.7 @ 1500
3952805	AJ	143.75	.597	10.82	250	18.01	11.7 @ 1570
3952806	AO	153.45	.610	11.52	250	18.29	11.7 @ 1640
3952807	AQ	153.45	.610	11.52	250	18.57	11.7 @ 1710
3952808	AR	131.65	.595	9.92	275	16.86	11.7 @ 1410
3952809	AW	131.75	.595	9.92	275	17.11	11.7 @ 1480
3952810	AZ	140.05	.607	10.52	275	17.37	11.7 @ 1550
3952811	GI	140.05	.607	10.52	275	17.62	11.7 @ 1620
3952812	GO	149.85	.621	11.22	275	17.87	11.7 @ 1690
3952813	GQ	149.85	.621	11.22	275	18.13	11.7 @ 1760
3952814	GS	130.99	.618	9.82	320	16.10	11.7 @ 1400
3952815	GT	131.05	.618	9.82	320	16.32	11.7 @ 1470
3952816	GU	131.05	.618	9.82	320	16.54	11.7 @ 1540
3952817	GV	131.05	.618	9.82	320	16.76	11.7 @ 1610
3952818	GW	138.05	.629	10.32	320	16.98	11.7 @ 1680
3952819	GX	138.05	.629	10.32	320	17.17	11.7 @ 1740
3952820	GY	149.29	.646	11.12	320	17.35	11.7 @ 1800
3952821	GZ	149.35	.646	11.12	320	17.54	11.7 @ 1860
3952822	AA	149.35	.646	11.12	320	17.73	11.7 @ 1920
3952823	AB	132.05	.654	9.82	390	16.14	11.7 @ 1720
3952824	AC	132.15	.654	9.82	390	16.42	11.7 @ 1830
3952825	AD	137.75	.663	10.22	390	16.70	11.7 @ 1940
3960655	GA	125.85	.659	9.22	435	15.20	11.7 @ 1510
3960665	GB	125.89	.659	9.22	435	15.52	11.7 @ 1650
3960686	GC	125.94	.659	9.22	435	15.32	11.7 @ 1780
3974684	GD	160.82	.617	11.92	250	18.85	11.7 @ 1780
3974686	GE	133.40	.595	9.92	275	16.60	11.7 @ 1340
3974688	GF	133.78	.654	9.82	390	15.86	11.7 @ 1610
3983298	-	175.89	.635	13.02	250	19.13	11.7 @ 1850
3983299	-	175.92	.635	13.02	250	19.41	11.7 @ 1920
3983300	AK	170.88	.645	12.62	275	18.38	11.7 @ 1830
3983301	AL	170.91	.645	12.62	275	18.64	11.7 @ 1900
3983302	-	173.75	.649	12.82	275	18.89	11.7 @ 1970
3983303	AN	163.78	.663	12.02	320	18.10	11.7 @ 2040
3983304	AP	163.47	.663	12.02	320	17.92	11.7 @ 1980
3983337	AM	171.22	.645	12.62	275	18.82	11.7 @ 1950

STEERING, DRIVELINE, WHEELS AND TIRES

MANUAL STEERING (Standard)

Description	Semi-reversible, recirculating ball nut gear, and a energy absorbing steering column for safety. Tilt steering wheel optional.
Ratios	Gear, 24:1; overall, 27.9:1
Turning diameters (ft)	
Outside front, wall to wall	45.5
Outside front, curb to curb	42.0
Number of wheel turns, lock to lock	5.2
Outside wheel angle with inside wheel @ 20°	18.6°
Linkage	Parallelogram, front of wheels, 2 tie rods
Steering wheel	
Type	oval
Diameter	15.5 x 16.25

POWER STEERING, RPO N40

(Same as standard Manual Steering except as shown)

Type	Integral gear, with vane-type pump driven by crankshaft pulley providing hydraulic pressure. Variable ratio power steering gear for all except wagons and El Camino.
Ratios	
Wagons and El Camino	Gear, 17.5:1; overall, 20.3:1
All except wagons and El Camino	Gear: 16:1 on center to 12.4:1. Overall: 18.7:1 to 12.4:1.
Number of wheel turns, lock to lock	2.9

DRIVELINE

Type	Straight tube
Number used	One
Diameter (O.D.)	3.25
Length (C/L of U-Joints) for manual transmissions	
112 in. wheelbase	56.34
116 in. wheelbase	60.14
Wall thickness	.065
Universal joints	
Type	Cross
Number used	Two
Bearings	Prepack, anti-friction
Drive and torque	Through rear suspension control arms

WHEELS, REGULAR PRODUCTION

Type	Short spoke spider
Attachment to hub	5 Hex nuts, 7/16-20 UNF 2-B, on a 4.75 diameter bolt circle
Size	
Except Wagons, El Camino and SS	14 x 5
Wagons and El Camino	14 x 6
SS	14 x 7
Offset	
14 x 5	.60
14 x 6	.88
14 x 7	.34

WHEELS, RALLY-TYPE, RPO ZJ7

(Same as regular production except as follows)

Type	large ventilation slots
Size	14 x 6
Offset	.88

TIRES, REGULAR PRODUCTION

Construction	Fiberglass bias belted
Load range	B
Sizes	
E78 x 14 (6-cyl. except wagons, El Camino)	
Static loaded radius	12.2
Loaded Rev/mi @ 45 mph	800
Capacity @ 24 psi	NA
F78 x 14 (V-8's except SS and El Camino except SS)	
Static loaded radius	12.4
Loaded Rev/mi @ 45 mph	785
Capacity @ 24 psi	NA
F70 x 14 (SS except El Camino)	
Static loaded radius	12.1
Loaded Rev/mi @ 45 mph	783
Capacity @ 24 psi	NA
G70 x 14 (El Camino SS)	
Static loaded radius	12.4
Loaded Rev/mi @ 45 mph	780
Capacity @ 24 psi	NA
G78 x 14 or G78 x 14D (Station Wagons)	
Static loaded radius	B-12.6
Loaded Rev/mi @ 45 mph	D-12.6
Capacity @ 24 psi	B-778
Static loaded radius	D-773
Loaded Rev/mi @ 45 mph	B-NA
Capacity @ 24 psi	D-NA

REAR AXLE

Description	Semifloating housing consists of two welded tubes pressed into crossbore of cast iron carrier. Carrier contains an overhung pinion and hypoid gear supported by two taper roller bearings.
Pinion offset	(Mert) 1.50
Hypoid gear PD	
2.56, 2.73, 3.08, 3.36	8.125
2.73, 3.31	8.875
Pinion bearing adjustment	Shim
Lubricant	
Type	Military Spec. MIL-L-2105-B
Viscosity	SAE 80
Capacity (pts)—8.125 hypoid gear	3.75
—8.875 hypoid gear	4.25

AXLE SHAFT

Type	Forged with hardened steel with integral drive flange
Wheel bearings	Single row cylindrical roller, one per wheel
Oil seal	Steel encased spring loaded synthetic rubber

BEARING AND PINION GEAR TOOTH COMBINATIONS

8.125 Ring Gear	
2.56 ratio	41.16
2.73:1	41.15
3.08	37.12
3.36	37.11
8.875 Ring Gear	
2.73	41.15
3.31	43.13

ROSTERACTION DIFFERENTIAL (See Power Trains)

Type	Cone clutches or dual disc clutches
------	-------------------------------------

REAR SUSPENSION

Description	Link type; 2 upper and 2 lower control arms supporting rear axle. Drive and torque taken through control arms.
Wheel travel (design)	
Total—Except wagon and pickup	8.80
Wagon and pickup	8.23
Distance—Except wagon and pickup	3.59
Wagon and pickup	2.91
Rebound	5.21
Wheel to spring, travel ratio	1.06

SHOCK ABSORBERS

Type	Direct, double-acting, hydraulic; air booster type for Sedan Pickup.
Estimated diameter	1.00

REAR AXLE AND SUSPENSION

REAR SPRINGS

Selected from a family of springs by Electronic Data Processing which identifies the correct springs for the weight of the vehicle including optional equipment ordered by the customer.

REAR SPRING SPECIFICATIONS

Part Number	Assembly Code	Cut-Off Length	Wire Dia.	Total Coils	Deflection Rate (lbs per inch)	HEIGHTS	
						Free	Working (In. @ lbs.)
3693389	BU	103.8	.522	6.25	100	14.70	9.00 @ 570
3893385	BE	103.8	.522	6.25	100	15.00	9.00 @ 600
3893386	BF	105.9	.525	6.35	100	15.31	9.00 @ 630
3952826	BI	103.9	.522	6.25	100	15.6	9.00 @ 660
3893390	BW	105.9	.525	6.35	100	16.01	9.00 @ 700
3952827	BL	92.6	.539	5.65	130	12.77	9.00 @ 490
3952828	BM	92.6	.539	5.65	130	13.08	9.00 @ 530
3952829	BP	92.7	.539	5.65	130	13.40	9.00 @ 580
3952830	BQ	98.5	.550	5.95	130	13.85	9.00 @ 630
3952831	BR	98.0	.550	5.95	130	14.23	9.00 @ 680
3952832	BS	102.6	.557	6.15	130	14.85	9.00 @ 760
3952833	BT	91.1	.566	5.55	160	12.63	9.00 @ 580
3952834	BX	91.2	.566	5.55	160	13.41	9.00 @ 705
3952835	BY	105.1	.592	6.25	160	14.63	9.00 @ 900
3952837	BA	117.0	.613	6.85	160	15.06	9.00 @ 970
3949015	BB	117.1	.613	6.85	160	15.53	9.00 @ 1045
3949002	BC	109.7	.637	6.45	200	13.80	9.00 @ 960
3949004	BD	109.7	.637	6.45	200	14.00	9.00 @ 1000
3949006	BG	109.7	.637	6.45	200	14.30	9.00 @ 1060
3960651	OO	85.2	.553	5.25	160	11.94	9.00 @ 470
3960652	OQ	85.2	.553	5.25	160	12.19	9.00 @ 510
3974697	OI	105.9	.525	6.35	100	15.90	9.00 @ 690
3974698	OX	103.7	.522	6.25	100	14.40	9.00 @ 540
3974701	OZ	105.0	.592	6.25	100	13.63	9.00 @ 740
3974700	OY	111.8	.640	6.55	200	14.60	9.00 @ 1120
3980776	OB	94.7	.558	5.75	144	12.40	9.00 @ 490
3980777	OC	94.7	.558	5.75	144	12.61	9.00 @ 520
3980778	OD	94.8	.558	5.75	144	12.82	9.00 @ 550

SERVICE BRAKES, REGULAR PRODUCTION

Type	Duo-servo 4-wheel hydraulic; dual circuit hydraulic system with warning lamp, and reverse self adjusting feature.
Line pressure at 100 lb pedal load	805
Braking ratios	
Pedal	6.32
Hydraulic	4.29
Overall	27.11
Wheel cylinder area distribution (percent)	58.5 F; 41.5 R
Brake drum	
Diameter	9.5
Construction	Composite, web cast into rim
Material	
Web	HR steel
Rim	Cast iron alloy
Swept drum area	268.8
Brake lining	
Material	Compression molded asbestos composition wet rolled; grooved primary linings front and rear.
Length	
Primary, front and rear	9.01
Secondary, front and rear	9.75
Width	
Front linings	2.50
Rear linings	2.00
Thickness, minimum @ C/L	
Primary, front and rear	.17
Secondary, front and rear	.20
Method of attachment	Bonded
Total effective area	155.2
Master cylinder	
Piston diameter	1.00
Piston travel (with available pedal travel)	1.13
Wheel cylinders	
Piston diameter	
Front	1.125
Rear	.875
Foot pedal travel	7.10

PARKING BRAKE

Type	Mechanical: Pull rods and cables operate two rear service brakes; parking brake "ON" warning lamp provided.
Total effective area	68.2
Control	Fanidium foot pedal; released by T handle located on instrument panel to left of steering column.

POWER BRAKES, RPO J50 (Same as regular production service brakes except as follows)

Type	Vacuum power unit added to assist master cylinder; integral system.
Pedal effort	Approximately 30 percent less than regular production service brakes at same deceleration rate
Braking ratios	
With regular production service brakes	
Pedal	3.4
Hydraulic	4.29
Overall	14.6
With front wheel disc brake system	See front wheel disc brakes
Master cylinder	
Piston travel (With available pedal travel)	1.42
Foot pedal travel	4.84

FRONT WHEEL DISC BRAKES, RPO J52 (Regular production service brakes at rear wheels; power assist required)

Type	Hub mounted front discs, with self-adjusting single piston caliper units mounted on the steering knuckle, a metering valve is provided for balance between front and rear brakes
Braking ratios	
Pedal	3.4
Hydraulic	14.1
Overall	48.0
Total effective lining area, disc and drum	106.1
Gross lining area, disc and drum	118.1
Disc	
Diameter	11.0
Material	Cast iron
Swept area per disc	106.4
Swept disc and drum area	332.4
Disc lining	
Material	Wet compression molded asbestos composition.
Size	5.96x2.21x.41
Method of attachment	Riveted
Total effective area per lining	9.5
Gross lining area per lining	10.6
Master cylinder	
Piston diameter	1.125
Piston travel (With available pedal travel)	1.44
Wheel cylinders	
Front calipers	
Number per wheel	1
Diameter	2.9375
Rear drums	
Diameter	.875
Foot pedal travel	4.84

BULBS AND LAMPS

BULBS AND LAMPS	NUMBER REQUIRED AND TRADE NUMBER	CANDLE POWER PER LAMP	
Automatic transmission quadrant	Column 1-194	2	
Automatic transmission position pattern	Floor console, 2-1445	1	
Back-up	2-1156	32	
Brake warning	1-194	2	
Courtesy			
Instrument panel	2-631	6	
Seat separator	1-212	6	
Directional signal indicators	2-194	2	
Dome	1-211	12	
Generator indicator	1-194	2	
Glove compartment	1-1895	2	
Headlamp	Outer	2-4002	High beam 37.5W
			Low beam 55.0W
	Inner	2-4001	High beam 37.5W
Headlamp hi-beam indicator	1-194	2	
Heater controls	1-1445	1	
Instrument cluster	10-194	2	
License plate, rear	1-67	4	
Luggage compartment	1-1003	15	
Oil pressure indicator	1-194	2	
Parking			
Park	2-1157	3	
Turn		32	
Radio	1-1893	2	
Side Marker - Front	2-194	2	
Side Marker - Rear	2-194	2	
Spot Lamp - Portable	1-4416	30W	
Tail			
Tail	2-1157	3	
Stop and turn		32	
Temperature indicator	1-194	2	
Underhood	1-93	15	

FUSES AND CIRCUIT BREAKERS

CIRCUIT	TYPE OF PROTECTION	LOCATION AND CIRCUIT*
Air conditioning	AGC 25 fuse	In line
	AGC 25 fuse	Fuse panel (g)
Auto. trans. quadrant lamp	AGC 20 fuse	Fuse panel (c)
Back-up lamps	AGC 20 fuse	Fuse panel (d)
Cigarette lighter	AGC 20 fuse	Fuse panel (b)
Clock	AGC 20 fuse	Fuse panel (b)
Clock lamp (with tachometer option)	AGC 4 fuse	Fuse panel (c)
Courtesy lamps	AGC 20 fuse	Fuse panel (b)
Defogging unit	AGC 20 fuse	Fuse panel (d)
Direction signal indicator lamps	AGC 20 fuse	Fuse panel (c)
Dome lamp	AGC 20 fuse	Fuse panel (b)
Folding top motor	40 amp CB	Hinge pillar
Fuel gage	AGC 10 fuse	Fuse panel (d)
Generator indicator lamp	AGC 10 fuse	Fuse panel (d)
Glove compartment lamp	AGC 20 fuse	Fuse panel (b)
Headlamps	15 amp CB	Light switch
Headlamps hi-beam indicator lamp	15 amp CB	Light switch
Heater blower motor	AGC 10 fuse	Fuse panel (g)
Heater controls lamp	AGC 4 fuse	Fuse panel (c)
Instrument cluster lamps	AGC 4 fuse	Fuse panel (c)
License plate lamp, rear	AGC 20 fuse	Fuse panel (b)
Luggage compartment lamp	AGC 20 fuse	Fuse panel (b)
Oil pressure indicator lamp	AGC 10 fuse	Fuse panel (d)
Brake indicator lamp	AGC 10 fuse	Fuse panel (d)
Parking lamps	20 amp CB	Light switch
Power seats	40 amp CB	Hinge pillar
Power windows	40 amp CB	Hinge pillar
Radio and radio lamp	AGC 10 fuse	Fuse panel (e)
Side Marker lamp - Front	AGC 20 fuse	Light switch
Side Marker lamp - Rear	AGC 20 fuse	Light switch
Speed warning device	SAE 20 fuse	Fuse panel (b)
Spot lamp - - - Portable	AGC 20 fuse	Fuse panel (b)
Tachometer	AGC 10 fuse	Fuse panel (d)
Tail, stop and turn lamps	AGC 20 fuse	Fuse panel (b)
Tailgate window motor	40 amp CB	Hinge pillar
Temperature indicator lamp	AGC 10 fuse	Fuse panel (d)
Traffic hazard indicator	AGC 20 fuse	Fuse panel (b)
Underhood lamp	SAE 20 fuse	In line
Windshield wiper, two-speed	SAE 20 fuse	Fuse panel (f)
	14 amp CB	Switch

* Letter suffix indicates same circuit



BODY

. EXTERIOR PAINT PROCESS	2
EXTERIOR-INTERIOR COLORS	3
● BODY CONSTRUCTION AND GLASS AREA	7

EXTERIOR PAINT PROCESS

1. **RUSTPROOFING.** Assembled car bodies are chemically sprayed to clean and etch the metal surfaces for corrosion resistance and paint adhesion. Unassembled sheet metal parts follow the same process.
2. **BODY AND SHEET METAL PRIMERS.** Four corrosion resistant primers, specially formulated, are hand sprayed on the body in areas where rust might develop. Lower areas considered especially vulnerable are coated with another rust inhibiting compound.
3. **PRIMER COAT** is applied to all outside and inside surfaces of front fenders and hoods. The parts are mechanically dipped or flow-coated to insure coating in all seams and secluded areas, and baked at 390 degrees F. for 30 minutes. A coat of sealer is then applied by hand spray to all surfaces requiring another coat of lacquer.
4. **FLASH PRIMER AND PRIMER-SURFACER COATS.** An air-dry flash primer coat is hand sprayed on surfaces below the body belt line. Then a gray primer-surfacer coat is hand sprayed on all outside surfaces of the body and oven baked for 45 minutes at 285 degrees F.
5. **INITIAL SANDING.** Power wet sanding, followed by hand sanding, is done on all body surfaces requiring lacquering. This insures a smooth surface for the lacquer finish. To remove the water, the body is wiped and run through an infra-red oven.
6. **LACQUERING.** Three coats of acrylic lacquer are spread on the exterior surfaces of the body and sheet metal parts to build up a finish of the required thickness for each color.
7. **INITIAL BAKING.** To harden the paint for final sanding, the body and sheet metal parts are baked for approximately 10 minutes at 200 degrees F.
8. **FINAL SANDING.** To remove body surface defects, power and hand sanding is done with fine grit sandpaper and mineral spirits as a wetting agent. Sanded areas are wiped to insure a clean surface before final baking.
9. **FINAL BAKING.** To assure a durable, hard, high luster finish the lacquer is baked for 30 minutes at 275 degrees F. Reheating the lacquer after final sanding permits paint film to soften, allowing surface blemishes and sanding scratches to disappear during the thermo-reflow process.
10. **UNDERCOATING.** To block out road noise, an asbestos fiber sound deadener with asphalt base is sprayed inside the wheel housings and on the bottom of the underbody at designated areas.
11. **PAINT REPAIR AND PROTECTION.** Mars, nicks, or scratches that occur during final assembly are corrected at the factory before shipment. When required, light "slush" polishing brings painted surfaces to a high luster finish. Wax is applied to all horizontal surfaces of each vehicle and polished out for protection during shipment. The wax contains no silicones, thus eliminating any paint contamination problem.

EXTERIOR-INTERIOR COLORS

MALIBU 135-13600 SERIES

MODELS				TRIM		INTERIOR TRIM COLOR AND RPO NUMBERS							
37	39	67	69	Bench	Bucket	Black	Med. Blue	Saddle	Dark Green	Med. Gold	Turquoise	Ivory	Red
X	X		X	Cloth		753	762		782	776			
	X		X	Cloth							779		
X	X	X	X	Vinyl		755							
		X		Vinyl			764						
X		X		Vinyl				770				790	787
X	X			Vinyl					795				
	X			Vinyl						777			
X		X			Vinyl	756		771				791	788
		X			Vinyl		765						
X					Vinyl				796				

RPO EXTERIOR COLORS

19	Tuxedo Black	X	X	X	X	X	X	X	X	X	
14	Cortez Silver	X	X	X	X			X	X	X	
34	Misty Turquoise	X						X	X		
10	Classic White	X	X	X	X	X	X	X	X	X	
28	Fathom Blue	X	X							X	
75	Cranberry Red	X		X						X	X
25	Astro Blue	X		X						X	
50	Gobi Beige	X		X	X	X				X	
48	Forest Green	X		X	X	X				X	
45	Green Mist	X		X	X					X	
58	Autumn Gold	X		X	X	X				X	
63	Desert Sand	X		X						X	
55	Champagne Gold	X		X	X	X				X	
78	Black Cherry	X		X						X	X
17	Shadow Gray	X	X	X	X					X	X

RPO		TWO-TONE @										
Lwr.	Upr.											
25	10	Astro Blue Classic White	X	X							X	
34	10	Misty Turquoise Classic White	X						X	X		
25	28	Astro Blue Fathom Blue	X	X							X	
28	25	Fathom Blue Astro Blue	X	X							X	
55	10	Champagne Gold Classic White	X		X	X	X				X	
58	10	Autumn Gold Classic White	X		X	X	X				X	
63	10	Desert Sand Classic White	X		X						X	

FOLDING TOP COLOR

White - Regular Production

Black - RPO

@ - Not available on Convertible models.

EXTERIOR-INTERIOR COLORS

VINYL ROOF COLORS

RPO	EXTERIOR COLOR	VINYL ROOF COLORS				
		Black	White	Dark Blue	Dark Green	Dark Gold
19	Tuxedo Black	X	X			
14	Cortez Silver	X	X	X		
78	Black Cherry	X	X			
10	Classic White	X	X	X	X	
17	Shadow Gray	X				
75	Cranberry Red	X	X			
25	Astro Blue	X	X	X		
55	Champagne Gold	X	X			X
58	Autumn Gold	X	X			X
50	Gobi Beige	X	X			X
45	Green Mist	X	X		X	
48	Forest Green	X	X		X	
63	Desert Sand	X	X			
34	Misty Turquoise	X	X			
28	Fathom Blue	X	X	X		

WINDSHIELD PILLAR MOLDING COLORS

INTERIOR TRIM COLOR	PILLAR MOLDING COLOR
Black	Black
Medium Blue	Dark Blue
Medium Saddle	Dark Saddle
Dark Green	Dark Green
Ivory	Black
Medium Turquoise	Dark Turquoise
Medium Red	Dark Red
Medium Gold	Dark Gold

SEAT BELT AND SHOULDER BELT COLORS

INTERIOR TRIM	STANDARD (a)	DELUXE (b)
	Seat Belts, Shoulder Belts, Roof Rail Retainer, Belt Retractor Colors	
Black	Black	Black
Medium Blue	Dark Blue	Dark Blue
Medium Saddle	Black	Medium Saddle
Dark Green	Dark Green	Dark Green
Ivory	Black	Black
Medium Turquoise	Black	Dark Turquoise
Medium Red	Black	Medium Red
Medium Gold	Medium Gold	Medium Gold

(a) Standard Seat Belt and Shoulder Belt Buckles are plastic, same color as belts.

(b) Seat Belt and Shoulder Belt Buckles are brushed finish (includes Passenger-Driver Mini-Buckle).

EXTERIOR-INTERIOR COLORS

STATION WAGON SERIES EL CAMINO SERIES

SERIES	BODY STYLE			SEAT TRIM		INTERIOR COLORS AND RPO TRIM NUMBERS		
	36	46	80	Bench	Bucket	Black	Saddle	Blue
Nomad	X			Vinyl		750	772	759
Greenbrier	X	X		Vinyl		752	773	761
Concours	X	X		Vinyl		755	770	764
Concours Estate	X	X		Vinyl		755	770	764
Standard El Camino			X	Vinyl		752	773	761
Custom El Camino			X	Vinyl		755	770	764
Custom El Camino			X		Vinyl	756	771	765

VINYL ROOF COLORS @					RPO	EXTERIOR COLORS			
Black	White	Dark Blue	Dark Green	Dark Gold					
X	X				19	Tuxedo Black	X	X	X
X	X	X	X		10	Classic White	X	X	X
X	X	X			14	Cortez Silver	X	X	X
X	X				75	Cranberry Red	X	X	
X	X				78	Black Cherry	X	X	
X	X			X	55	Champagne Gold	X	X	
X	X			X	58	Autumn Gold	X	X	
X	X			X	50	Gobi Beige	X	X	
X	X				63	Desert Sand	X	X	
X	X		X		45	Green Mist	X	X	
X	X		X		48	Forest Green	X	X	
X	X				34	Misty Turquoise	X		
X	X	X			25	Astro Blue	X		X
X	X	X			28	Fathom Blue	X		X
X					17	Shadow Gray	X	X	X

@ Vinyl Roof for El Camino Only

EXTERIOR-INTERIOR COLORS

● CHEVELLE 133-13400 SERIES

MODEL	TRIM		INTERIOR TRIM COLOR		
			Black	Medium Blue	Dark Green
37 69	Cloth	Vinyl	751	760	786
X X	X		752		
X X		X			

RPO	EXTERIOR COLORS			
19	Tuxedo Black	X	X	X
14	Cortez Silver	X	X	X
34	Misty Turquoise	X		
10	Classic White	X	X	X
28	Fathom Blue	X	X	
75	Cranberry Red	X		
25	Astro Blue	X	X	
50	Gobi Beige	X		X
48	Forest Green	X		X
45	Green Mist	X		
58	Autumn Gold	X		X
63	Desert Sand	X		X
55	Champagne Gold	X		X
78	Black Cherry	X		
17	Shadow Gray	X	X	X

RPO		TWO-TONE			
Lwr.	Upr.				
25	10	Astro Blue/Classic White	X	X	
34	10	Misty Turq./Classic White	X		
25	28	Astro Blue/Fathom Blue	X	X	
28	25	Fathom Blue/Astro Blue	X	X	
55	10	Champagne Gold/Classic White	X		X
58	10	Autumn Gold/Classic White	X		X
63	10	Desert Sand/Classic White	X		

BODY CONSTRUCTION AND GLASS AREA

GENERAL

Type Unisteel, with cowl, roof, underbody and body panels welded to form body shell. Front and rear lids are of double-panel construction and hinge assembled to body. Separate frame and bolt-on front end sheet metal, with protective inner plastic fender skirts on all except Station Wagons and Pickups. Energy absorbing air-gap windshield pillar moldings for all models except convertible. Safety guard door beams for all models. Contoured windshield header except Convertible, and cargo guard luggage barrier on coupe and sedan models.

DOORS AND LOCKS

Door construction Double steel panels, hinged at front.
 Door handles Push-button with fork type door locks. Inside push-button locks and 2-position free-wheeling inside door handles on all doors.
 Door ventipanes Crank operated except sport coupe and convertible models, which feature full door glass.

HOOD AND TRUNK LID

Type Counterbalanced, with spring loaded toggle action hinges on rear of hood and boxed hinges on trunk lid with torsion rod. Two hood stop pins mounted on the cowl.

VENTILATION

High level air intake for passenger compartment with double wall plenum chamber, providing washing and air drying of rocker panels for corrosion resistance. Air and water travel through rocker panels and drain at end of rocker inner panels. Astro Ventilation with instrument panel outlets standard on Sport Coupes and Convertibles.

TAILGATE

Type Dual action.
 Two separate latches unlock the tail gate as a gate or door.

SEAT CONSTRUCTION

Type
 Front seat cushion
 ● 2.00 polyfoam 131-13236,133-13400,135-13600,13836-46
 Rear seat cushion
 ● Jute and cotton 131-13236,133-400
 1.00 poly foam 135-13600, 13836-46
 3rd seat cushion
 0.75 poly foam 13446, 13646, 13846

WINDSHIELD WIPERS

Type Concealed dual 2-speed electric for Malibu, Concours and Concours Estate Wagons, and Custom El Camino. Conventional dual 2-speed system for Chevelle, Nomad and Greenbrier wagons, and standard El Camino.
 Linkage Parallel acting with articulated left arm for Malibu, Concours and Concours Estate Wagons and Custom El Camino.
 ● Conventional parallel acting system for Chevelle, Nomad and Greenbrier wagons, and standard El Camino.

SPARE TIRE MOUNT

Location Sedans and sport Coupe, horizontal, RH side of trunk floor; Station Wagon, vertically in right hand side of cargo compartment rear of wheelhouse behind removable cover. Tools consist of bumper jack with combination lever handle and wheel nut wrench stored under tire.

BODY GLASS VISIBILITY AREA

	MODELS					
	69	39	37	67	36-46	80
Windshield	1249.6		1208.7	1211.8	1249.6	1208.7
Front Door Vent	90.0	97.8	-		90.0	88.8
Front Door Window	516.9	515.4		936.8	516.9	560.0
Rear Door Window	590.1	736.2			570.8	-
Rear Quarter Window	-		397.2	323.6	1238.5	-
Back Window	1032.2	1032.5	1059.4	539.7	757.0	695.6
Total Area (Sq. in.)	3472.8	3631.5	3602.1	3011.9	4422.8	2553.1



DIMENSIONS AND WEIGHTS

INTERIOR DIMENSIONS	2
LUGGAGE CAPACITY	2
STATION WAGON CARGO SPACE	2
EXTERIOR DIMENSIONS	3
VEHICLE WEIGHTS	4

INTERIOR DIMENSIONS

FRONT COMPARTMENT

CODE	DESCRIPTION	4-DOOR SEDAN	SPORT SEDANS	SPORT COUPES	CONVERT- IBLES	STATION WAGONS	SEDAN PICKUP
H3	Seat cushion height			10.5		10.9	10.5
H11	Entrance height	30.1	30.3	29.5		29.7	30.1
H13	Steering wheel thigh clearance	4.2		4.0		4.1	4.1
H30	H point to heel point				8.1		
H32	Seat cushion deflection		4.0		3.9	3.8	4.0
H58	H point rise				0.8		
H61	Effective headroom	38.5	38.1	37.5	38.3	38.1	38.2
H70	H point to body O line	13.8		14.2		14.2	13.8
H75	Effective headroom - "T" point	38.7	38.3	37.6	38.5	38.2	38.3
W3	Shoulder room	58.2	58.4	58.2		58.3	58.2
W5	Hip room	59.8	59.5	59.7		59.7	59.8
L7	Steering wheel torso clearance	12.2		12.1		12.3	12.2
L17	H point travel				4.8		
L34	Effective leg room	42.7		42.8		42.8	42.5

REAR COMPARTMENT

H8	Seat cushion height	13.3	13.2	12.7		13.0	----
H12	Entrance height	29.5	29.9	----		29.7	----
H31	H point to heel point	10.8	10.7	10.1		10.6	----
H33	Seat cushion deflection		4.4		4.7	4.5	----
H51	Upper body opening to ground	48.1	48.5	----		48.3	----
H63	Effective headroom		37.1	36.3	36.9	38.3	----
H71	H point to body O line		14.0		13.4	14.0	----
H76	Effective headroom - "T" point		37.1	36.3	36.9	38.5	----
W4	Shoulder room	57.4	57.2	56.9	47.9	57.4	----
W6	Hip room	59.4	59.2	52.9	50.4	59.4	----
L3	Rear compartment room		25.8		23.7	26.1	----
L50	H point couple distance		32.8		30.6	32.8	----
L51	Effective leg room	35.0	34.9	32.3		34.6	----

STATION WAGON THIRD SEAT

W85	Shoulder room					57.5	
W86	Hip room					47.0	
H86	Effective headroom					35.9	
L86	Effective leg room					30.5	
L87	Knee room					10.5	

LUGGAGE COMPARTMENT

---	Opening width						
---	Interior height						
---	Interior width						
---	Interior length						
H195	Liftover height		26.6		25.9		28.7
V1	Usable luggage capacity (cu.ft.)		13.5	14.6	8.5		----
---	Total volume (cu.ft.)						

STATION WAGON CARGO SPACE

H201	Maximum cargo height					31.6	
H202	Rear opening height					28.6	
H250	Tailgate to ground height					21.4	21.4
W200	Cargo width - front					59.5	58.8
W201	Cargo width - wheelhouse					44.5	45.3
W203	Rear opening width at floor					50.0	54.6
W204	Rear opening width at belt					49.6	
W205	Rear opening width above belt					49.4	
L200	Maximum cargo length - front seat					116.6	
L201	Maximum cargo length - second seat					85.0	
L202	Cargo length at floor - front seat					90.9	79.3
L203	Cargo length at floor - second seat					59.1	
L204	Cargo length at belt - front seat					79.9	
L205	Cargo length at belt - second seat					46.8	
V2	Total cargo volume (cu.ft.)					94.0	38.5

EXTERIOR DIMENSIONS

LENGTHS

CODE	DESCRIPTION	4-DOOR SEDAN	SPORT SEDANS	SPORT COUPES	CONVERT- IBLES	STATION WAGONS	SEDAN PICKUP
L101	Wheelbase	116.0		112.0		116.0	
L102	Tire size (standard)	E78-14 (6 cyd); F78-14 (V8)				G78-14 (a)	
L103	Overall length	201.2		197.2		206.5	
L104	Overhang - front			37.5			
L105	Overhang - rear		47.7			53.0	
—	Overall length - less bumpers						
L127	Body O line to C/L of rear wheels	99.5		95.5		99.5	
L128	Hood length at centerline			61.0			

WIDTHS

W101	Tread - front			60.0			
W102	Tread - rear			59.9			
W103	Maximum overall width of car			75.4			
W106	Front fender overall width		75.5			75.6	
W107	Rear fender overall width		75.4			75.3	75.4
W120	Overall car width, front doors open	132.3		150.1		132.3	132.3
W121	Overall car width, rear doors open	134.4		—		134.2	—

HEIGHTS

H101	Overall height (design)	53.2		52.6	52.9	55.1	54.4
—	Overall height (curb)						
H102	Front bumper to ground	13.8		14.3		15.0	15.0
H104	Rear bumper to ground	15.7		15.1		12.9	11.9
H111	Rocker panel to ground - rear	7.5		7.2		9.2	8.5
H112	Rocker panel to ground - front	8.4		8.5		9.8	9.4
H114	Hood at rear to ground	38.0		38.1		39.4	39.1
H115	Step height - front (design)			12.5			
H116	Step height - rear (design)	12.2		—			—
H125	Headlamp to ground	26.9		27.4		28.1	28.1
H126	Tail lamp to ground	20.5		19.9		26.0	25.0
H130	Step height - front (curb)						
H131	Step height - rear (curb)						
H136	Body O line to ground - front	4.8		5.1		6.2	5.8
H137	Body O line to ground - rear	4.1		3.7		5.9	5.1

CLEARANCES

H106	Angle of approach (degrees)	25.2		25.5		26.5	26.0
H107	Angle of departure (degrees)	21.2		21.0		17.0	16.5
H147	Ramp break over angle (degrees)	13.2		13.6		15.5	15.0
H148	Front suspension to ground	5.2		5.5		6.6	6.3
H149	Oil pan to ground	5.3		5.5		6.6	6.4
H150	Flywheel housing to ground	5.2		5.4		6.6	6.3
H151	Frame to ground		5.8			7.4	6.8
H152	Exhaust system to ground	4.7		4.6		6.2	5.7
H153	Rear axle to ground						
H154	Fuel tank to ground	7.4		7.0		10.7	10.1
H155	Tire well to ground	—		—		8.1	—
H156	Minimum ground clearance (H152)	4.7		4.6		6.2	5.7

(a) Sedan Pickup - F78-14

VEHICLE WEIGHTS

● CHEVELLE

MODEL SYMBOL		VEHICLE TYPE Description	SHIPPING WEIGHT			CURB WEIGHT		
6-CyL	V8		Front	Rear	Total	Front	Rear	Total
13369	---	4-Door Sedan	1786	1403	3189	1764	1528	3292
---	13469		1877	1416	3293	1857	1541	3398
13337	---	2-Door Sport Coupe	1769	1390	3159	1748	1515	3263
---	13437		1861	1404	3265	1840	1529	3369

MALIBU

13569	---	4-Door Sedan	1804	1417	3221	1784	1543	3327
---	13669		1899	1431	3330	1877	1557	3434
13537	---	2-Door Sport Coupe	1790	1407	3197	1770	1533	3303
---	13637		1885	1422	3307	1864	1547	3411
13539	---	4-Door Sport Sedan	1832	1470	3302	1812	1594	3406
---	13639		1926	1483	3409	1905	1608	3513
13567	---	2-Door Convertible	1784	1459	3243	1762	1584	3346
---	13667		1877	1475	3352	1856	1600	3456

NOMAD

13136	---	4-Door, 2-Seat Station Wagon	1681	1934	3615	1664	2055	3719
---	13236		1784	1934	3718	1767	2055	3822

GREENBRIER

13336	---	4-Door, 2-Seat Station Wagon	1676	1968	3644	1659	2089	3748
---	13436		1780	1968	3748	1763	2089	3852
---	13446	4-Door, 3-Seat Station Wagon	1764	2030	3794	1747	2151	3898

CONCOURS

13536	---	4-Door, 2-Seat Station Wagon	1696	1991	3687	1679	2112	3791
---	13636		1802	1992	3794	1785	2113	3898
---	13646	4-Door, 3-Seat Station Wagon	1784	2052	3836	1767	2173	3940

CONCOURS ESTATE

---	13836	4-Door, 2-Seat Station Wagon	1815	2006	3821	1798	2127	3925
---	13846	4-Door, 3-Seat Station Wagon	1804	2076	3880	1787	2197	3984

EL CAMINO

13380	---	2-Door Sedan Pickup	1789	1405	3194	1768	1531	3299
---	13480		1881	1419	3300	1860	1544	3404
13580	---		1800	1414	3214	1779	1539	3318
---	13680		1893	1428	3321	1872	1553	3425

SHIPPING WEIGHT: Weight of basic vehicle with regular equipment, including grease, oil and (3) gallons of gasoline, and engine coolant to capacity.

CURB WEIGHT: Shipping weight plus gasoline to capacity.

- For total shipping, and curb weights of vehicles equipped with the following options, add to or deduct from, the base vehicle weight (lbs.)

OPTIONAL EQUIPMENT

RPO	OPTION	WITH	WEIGHT
A31	Power Windows		+ 23
A51	Astro Bucket Seat		+ 20
AU3	Electric Door Locks	2-Door	+ 7
		4-Door	+ 9
C06	Electric Folding Top		+ 7
C08	Vinyl Roof Cover		+ 7
C60	Air Conditioning (V8 only)		+ 93
D55	Floor Console		+ 12
JL2	Power Disc Brakes	Base & 350	+ 21
		396	+ 26
J50	Power Brakes		+ 12
-	250 Cu.In. 6 Cyl. Engine (155 H.P.)	Powerglide Transmission	- 8
		Turbo Hydra-Matic Transmission	+ 26
-	307 Cu.In. V8 Engine (200 H.P.)	4-Speed Transmission	+ 18
		Powerglide Transmission	+ 8
L65	350 Cu.In. V8 Engine (250 H.P.)	Turbo Hydra-Matic Transmission	+ 28
		3-Speed Transmission	+ 37
		4-Speed Transmission	+ 55
		Powerglide Transmission	+ 39
L48	350 Cu.In. V8 Engine (300 H.P.)	Turbo Hydra-Matic Transmission	+ 65
		4-Speed Transmission	+ 54
		Powerglide Transmission	+ 45
LS3	402 Cu.In. V8 Engine (330 H.P.)	Turbo Hydra-Matic Transmission	+ 75
		4-Speed Transmission	+ 243
L34	402 Cu.In. V8 Engine (350 H.P.)	Turbo Hydra-Matic Transmission	+ 285
		4-Speed Transmission	+ 292(a)
L35	454 Cu.In. V8 Engine (360 H.P.)	Turbo Hydra-Matic Transmission	+ 346(a)
		H.D. 4-Speed Transmission	+ 348(a)
		Turbo Hydra-Matic Transmission	+ 402(a)
N40	Power Steering		+ 29
UM1	AM Radio & Tape Player		+ 25
UM2	AM-FM Radio & Tape Player		+ 39
U63	AM Radio, Pushbutton		+ 8
U69	AM-FM Radio, Pushbutton		+ 9
U79	Radio Stereo Equipment		+ 16

(a) Available as 'SS' equipment only - includes additional body and chassis equipment.

POWER TRAINS

POWER TEAM COMBINATIONS	2
POWER TEAM MULTIPLICATION FACTORS	3
ENGINE DATA AND RATINGS	4
ENGINE SPEED AND PISTON TRAVEL	5
VEHICLE PERFORMANCE FACTORS	6
ENGINE OUTPUT CURVES	7
PRINCIPAL COMPONENTS	9
FUEL SYSTEM	15
EXHAUST AND VENTILATION SYSTEM	16
LUBRICATION SYSTEM	17
COOLING SYSTEM	18
ELECTRICAL SYSTEM	19
CLUTCHES	21
THREE AND FOUR SPEED TRANSMISSIONS	21
POWERGLIDE TRANSMISSION	22
TURBO HYDRA-MATIC TRANSMISSION	23

POWER TEAM COMBINATIONS

ENGINE	TRANSMISSION	MODEL APPLICATION	AXLE RATIOS*	
			STD.	A/C
Turbo Thrift 250 250 Cubic Inch L-6 155 HP Standard	3-Speed (2.85:1 low)	All Models except Station Wagons & Pickups	3.08:1	NA
	Powerglide		3.08:1	NA
	Turbo Hydra-Matic		2.73:1	NA
	3-Speed (2.85:1 low)	Station Wagons & Pickups	3.36:1	NA
	Powerglide		3.36:1	NA
	Turbo Hydra-Matic		3.08:1	NA

Turbo Fire 307 307 Cubic Inch V-8 200 HP Standard	3-Speed (2.85:1 low)	All Models except Station Wagons & Pickups	3.08:1	3.08:1
	4-Speed (2.85:1 low)		3.36:1	3.36:1
	Powerglide		3.08:1	3.08:1
	Turbo Hydra-Matic		2.73:1	2.73:1
	3-Speed (2.85:1 low)	Station Wagons & Pickups	3.36:1	3.36:1
	4-Speed (2.85:1 low)		3.36:1	3.36:1
	Powerglide		3.36:1	3.36:1
	Turbo Hydra-Matic		3.08:1	3.08:1

Turbo Fire 350 350 Cubic Inch V-8 250 HP RPO L65	3-Speed (2.54:1 low)	All Models	3.08:1	3.08:1
	4-Speed (2.54:1 low)		3.36:1	3.36:1
	Powerglide		2.73:1	2.73:1
	Turbo Hydra-Matic		2.56:1	2.56:1

Turbo Fire 350 350 Cubic Inch V-8 300 HP RPO L48	4-Speed (2.52:1 low)	All Models	3.31:1	3.31:1
	Powerglide		2.73:1	2.73:1
	Turbo Hydra-Matic		2.73:1	2.73:1

Turbo Jet 400 402 Cubic Inch V-8 330 HP RPO LS3	4-Speed (2.52:1 low)	All Models	3.31:1	3.31:1
	Turbo Hydra-Matic		3.31:1	3.31:1

Turbo Jet 396 402 Cubic Inch V-8 350 HP RPO L34	4-Speed (2.52:1 low)	Sport Coupe Convertible & Pickup	3.31:1	3.31:1
	4-Speed (2.20:1 low)		3.31:1	3.31:1
	Turbo Hydra-Matic		3.31:1	3.31:1

Turbo Jet 454 454 Cubic Inch V-8 360 HP RPO LS5	HD 4-Spd (2.20:1 low)	Sport Coupe Convertible & Pickup	3.31:1	3.31:1
	Turbo Hydra-Matic		3.31:1	3.31:1

*Positraction axles available optionally for all ratios

MULTIPLICATION FACTORS

WITH MANUAL TRANSMISSIONS

ENGINE	CARBURETION	TRANSMISSION	TOTAL GEAR REDUCTION*					AXLE RATIO
			1st	2nd	3rd	4th	Rev	
250 Cu. In. L-6 155 HP Standard	Single Barrel	3-Speed	8.78	5.17	3.08		9.09	3.08
307 Cu. In. V-8 200 HP Standard	2-Barrel	3-Speed	8.78	5.17	3.08		9.09	3.08
		4-Speed	9.58	6.79	4.54	3.36	9.58	3.36
350 Cu. In. V-8 250 HP RPO L65	2-Barrel	3-Speed	7.82	4.62	3.08		8.10	3.08
		4-Speed	8.53	6.05	4.84	3.36	8.53	3.36
350 Cu. In. V-8 300 HP RPO L48	4-Barrel	4-Speed	8.34	6.22	4.83	3.31	8.57	3.31
402 Cu. In. V-8 330 HP RPO LS3	4-Barrel	4-Speed	8.34	6.22	4.83	3.31	8.57	3.31
402 Cu. In. V-8 350 HP RPO L34	4-Barrel	H. D. 3-Speed	8.59	5.61	3.55		8.55	3.55
		4-Speed (2.52:1)	8.34	6.22	4.83	3.31	8.57	3.31
		4-Speed (2.20:1)	8.28	5.43	4.20	3.31	7.48	3.31
454 Cu. In. V-8 360 HP RPO LS5	4-Barrel	4-Speed	8.28	5.43	4.20	3.31	7.48	3.31

WITH AUTOMATIC TRANSMISSIONS

ENGINE	TRANSMISSION	SELECTOR POSITION	TOTAL TORQUE MULTIPLICATION*	AXLE RATIO
250 Cu. In. L-6 155 HP Standard	Powerglide	Drive	11.77:1 - 3.08:1	3.08:1
		Low & Reverse	11.77:1 - 5.61:1	
	Turbo Hydra-Matic	Drive	14.44:1 - 2.73:1	2.73:1
		Low	14.44:1 - 6.88:1	
		Second	14.44:1 - 4.15:1	
	Reverse	11.00:1 - 5.27:1		
307 Cu. In. V-8 200 HP Standard	Powerglide	Drive	11.77:1 - 3.08:1	3.08:1
		Low & Reverse	11.77:1 - 5.61:1	
	Turbo Hydra-Matic	Drive	14.44:1 - 2.73:1	2.73:1
		Low	14.44:1 - 6.88:1	
		Second	14.44:1 - 4.15:1	
	Reverse	11.06:1 - 5.27:1		
350 Cu. In. V-8 250 HP RPO L65	Powerglide	Drive	10.10:1 - 2.73:1	2.73:1
		Low & Reverse	10.10:1 - 4.80:1	
	Turbo Hydra-Matic	Drive	13.54:1 - 2.56:1	2.56:1
		Low	13.54:1 - 6.45:1	
		Second	13.54:1 - 3.89:1	
	Reverse	10.37:1 - 4.94:1		
350 Cu. In. V-8 300 HP RPO L48	Powerglide	Drive	10.10:1 - 2.73:1	2.73:1
		Low & Reverse	10.10:1 - 4.80:1	
	Turbo Hydra-Matic	Drive	14.44:1 - 2.73:1	2.73:1
		Low	14.44:1 - 6.88:1	
		Second	14.44:1 - 4.15:1	
	Reverse	11.06:1 - 5.27:1		
402 Cu. In. V-8 330 HP RPO LS3 and 350 HP RPO L35	Turbo Hydra-Matic	Drive	17.25:1 - 3.31:1	3.31:1
		Low	17.25:1 - 8.21:1	
		Second	17.25:1 - 4.90:1	
		Reverse	14.46:1 - 6.88:1	
454 Cu. In. V-8 360 HP RPO LS5	Turbo Hydra-Matic	Drive	17.25:1 - 3.31:1	3.31:1
		Low	17.25:1 - 8.21:1	
		Second	17.25:1 - 4.90:1	
		Reverse	14.46:1 - 6.88:1	

* Axle ratio x transmission ratio

ENGINE DATA AND RATINGS

GENERAL DATA

Engine Type	L-6 OHV	V-8 OHV					
Piston Displacement (Cu.In.)	250	307	350	402	454		
Availability	Standard		L65	L48	LS3	L34	LS5
Number of Cylinders	Six		Eight				
Bore (nominal)	3.875		4.00	4.126		4.251	
Stroke (nominal)	3.53	3.25	3.48	3.76		4.00	
Compression Ratio	8.5:1		9.00:1		10.25:1		
Taxable (SAE) Horsepower	36.0	48.0	51.2	54.5		57.8	
Firing Order	1-5-3-6-2-4		1-8-4-3-6-5-7-2				
Idling Speed	3-Speed & 4-Speed (in neutral)		750	700	750	700	
	Powerglide (in drive)		600				
	Turbo Hydra-Matic (in drive)		600				
Comp. Press. (PSI) @ Cranking Speed, Engine Hot	140		150		160		
Power Plant Mountings	Front		Two, combination compression and shear type				
	Rear		One, shear type				
Measurements	Fan to rear of engine block		35.27	31.13	30.69	30.16	33.97
	Top of air cleaner to bottom of oil pan		27.44	29.49	29.29	26.79	27.62
	Width - including air cleaner		30.15	27.34	27.34	27.97	30.00

ADVERTISED ENGINE RATING

Engine Designation	Turbo-Thrift 250 L-6 155 HP	Turbo-Fire 307 V-8 200 HP	Turbo-Fire 350 V-8 250 HP	Turbo-Fire 350 V-8 300 HP	Turbo-Jet 400 V-8 330 HP	Turbo-Jet 400 V-8 350 HP	Turbo-Jet 454 V-8 360 HP
Availability	Standard	Standard	RPO L65	RPO L48	RPO LS3	RPO L34	RPO LS5
Carburetor	Single Bbl.	Two Bbl.	Two Bbl.	Four Bbl.	Four Bbl.	Four Bbl.	Four Bbl.
Gross Brake HP @ RPM	155 @ 4200	200 @ 4600	250 @ 4800	300 @ 4800	330 @ 4800	350 @ 5200	360 @ 4400
Gross Torque @ RPM (lb-ft)	235 @ 1600	300 @ 2400	345 @ 2800	380 @ 3200	410 @ 3200	415 @ 3400	500 @ 3200

ENGINE SPEED AND PISTON TRAVEL

TURBO-THRIFT 250 L-6 ENGINL

Transmission	3-Speed	Powerglide	Turbo Hydra-Matic
Rear Axle Ratio	3.08:1 (a)		2.73:1 (b)
Tire Size	E78 x 14 (c)		
Crankshaft Revolutions per Mile	2464.0		2184.0
Crankshaft RPM @ 1 MPH	Low	117.04	91.7
	Second	69.0	55.3
	Third	41.1	36.4 (direct)
	Reverse	121.5	74.5
Piston Travel (ft/mile)	1449.7		1284.9

(a) 3.36:1 on Station Wagons & Pickups (b) 3.08:1 on Station Wagons & Sedan Pickups
 (c) F78 x 14 on Sedan Pickups; G78 x 14 on Station Wagons

TURBO-FIRE 307 V-8 ENGINE

Transmission	3-Speed	4-Speed	Powerglide	Turbo Hydra-Matic	
Rear Axle Ratio	3.08:1 (a)	3.36:1	3.08:1 (a)	2.73:1 (b)	
Tire Size	F78 x 14 (c)				
Crankshaft Revolutions per Mile	2427.0	2647.7	2427.0	2151.2	
Crankshaft RPM @ 1 MPH	Low	115.3	125.8	90.3	
	Second	68.0	89.1	54.5	
	Third	40.5	60.0	40.5 (direct)	35.8 (direct)
	Fourth		44.1		
	Reverse	119.3	125.8	73.6	69.2
Piston Travel (ft/mile)	1314.6	1434.2	1314.6	1165.3	

(a) 3.36:1 on Station Wagons & Sedan Pickups (b) 3.08:1 on Station Wagons & Sedan Pickups
 (c) G78 x 14 on Station Wagons

TURBO-FIRE 350 V-8 ENGINES (RPO L65 & L48)

Transmission	RPO L65				RPO L48			
	3-Speed	4-Speed	Pwr/Gld	Trb/Hyd	4-Speed	Pwr/gld	Trb/Hyd	
Rear Axle Ratio	3.08:1	3.36:1	2.73:1	2.56:1	3.31:1		2.73:1	
Tire Size	F78 x 14 (a)							
Crankshaft Revolutions per Mile	2427.0	2647.7	2151.2	2017.3	2608.3		2151.2	
Crankshaft RPM @ 1 MPH	Low	102.7	112.1	63.1	84.7	109.5	63.1	90.3
	Second	60.7	79.4		51.1	81.7		54.5
	Third	40.5	63.5	35.8	33.6	63.5		35.8 (direct)
	Fourth		44.1			43.5		
	Reverse	106.4	112.1	63.1	64.9	112.6	63.1	69.2
Piston Travel (ft/mile)	1407.7	1535.7	1247.7	1170.0	1512.8		1247.7	

(a) G78 x 14 on Station Wagons

TURBO-JET 396 & 400 V-8 ENGINES (402 Cu.In. RPO L34 & LS3)

Transmission	RPO LS3-400			RPO L34-396		
	4-Speed	Trb/Hyd	4-Speed	4-Speed	Trb/Hyd	4-Speed
Rear Axle Ratio	3.31:1			3.31:1		
Tire Size	F78 x 14 (a)			F70 x 14 (b)		
Crankshaft Revolutions per Mile	2608.3			2605.0		
Crankshaft RPM @ 1 MPH	Low	109.5	107.8	109.4	95.5	107.7
	Second	81.7	64.3	81.6	71.2	64.5
	Third	63.5	43.5 (direct)	63.4	55.1	43.4 (direct)
	Fourth	43.5		43.4	43.4	
	Reverse	112.6	90.4	112.4	98.1	90.2
Piston Travel (ft/mile)	1634.5			1632.4		

(a) G78 x 14 on Station Wagons (b) G70 x 14 on Sedan Pickups

TURBO-JET 454 V-8 ENGINE (RPO LS5)

Transmission	4-Speed	Turbo Hydra-Matic
Rear Axle Ratio	3.31:1	
Tire Size	F70 x 14 (a)	
Crankshaft Revolutions per Mile	2605.0	
Crankshaft RPM @ 1 MPH	Low	95.5
	Second	71.2
	Third	55.1
	Fourth	43.4
	Reverse	98.1
Piston Travel (ft/mile)	1736.6	

(a) G70 - 14 on Sedan Pickup.

VEHICLE PERFORMANCE FACTORS

ENGINE	BASE 250 CU.IN. 155 HP	BASE 307 CU.IN. 200 HP	RPO L65 350 CU.IN. 250 HP	RPO L48 350 CU.IN. 300 HP	RPO LS3 402 CU.IN. 330 HP	RPO L34 402 CU.IN. 350 HP	RPO LS5 454 CU.IN. 360 HP
MODEL	13569	13669	13669	13669	13669	13637	13637

3-SPEED TRANSMISSION

Performance Weight (pounds)	3927	4034	4071				
Pounds per Gross Horsepower	25.33	20.17	16.28				
Pounds per Cu.In. Displacement	15.71	13.14	11.60				
Gross HP per Cu.In. Displacement	.620	.651	.714				
Power Displacement (cu.ft./mile)	178.22	215.59	245.78				
Displacement Factor (cu.ft./ton mile)	90.93	106.73	120.48				

4-SPEED TRANSMISSION

Performance Weight (pounds)		4052	4089	4088	4277	4218	4273
Pounds per Gross Horsepower		20.26	16.36	13.49	12.96	12.02	11.87
Pounds per Cu.In. Displacement		13.11	11.65	11.65	10.64	10.49	9.41
Gross HP per Cu.In. Displacement		.651	.714	.857	.821	.870	.793
Power Displacement (cu.ft./mile)		235.13	268.13	264.14	301.88	298.48	342.19
Displacement Factor (cu.ft./ton mile)		115.83	131.44	129.48	141.07	141.46	159.90

TURBO HYDRA-MATIC

Performance Weight (pounds)	3953	4062	4099	4109	4319	4271	4327
Pounds per Gross Horsepower	25.50	20.31	16.40	13.56	13.08	12.17	12.02
Pounds per Cu.In. Displacement	15.81	13.20	11.68	11.71	10.74	10.62	9.53
Gross HP per Cu.In. Displacement	.620	.651	.714	.857	.821	.870	.793
Power Displacement (cu.ft./mile)	157.97	191.09	204.29	217.85	301.98	298.48	342.19
Displacement Factor (cu.ft./ton mile)	79.78	94.13	99.65	106.27	139.76	139.48	158.42

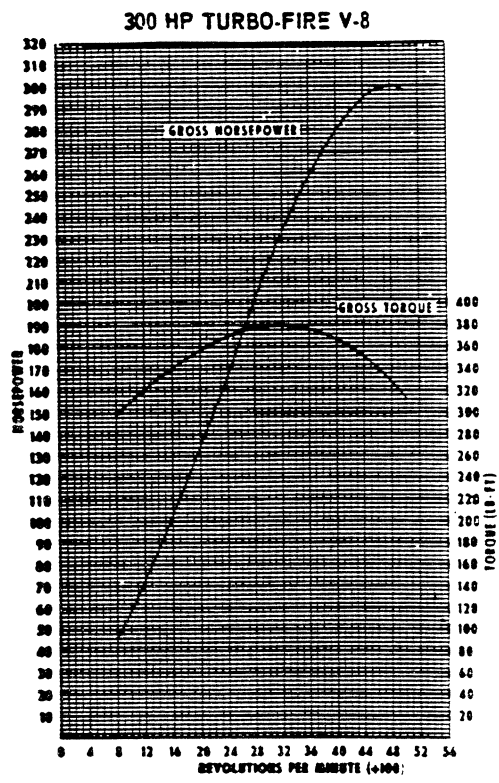
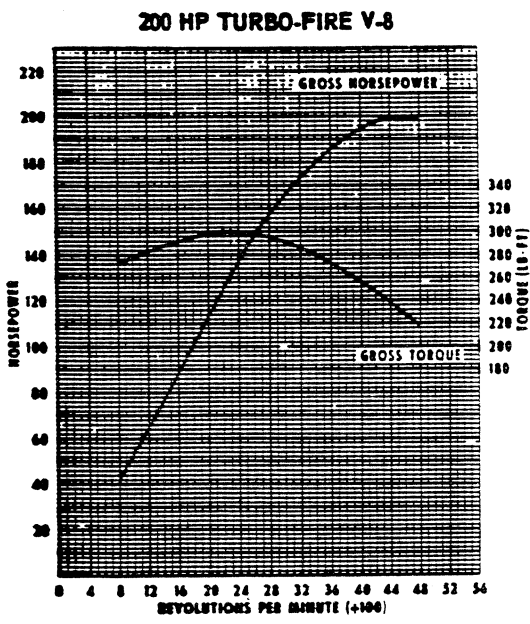
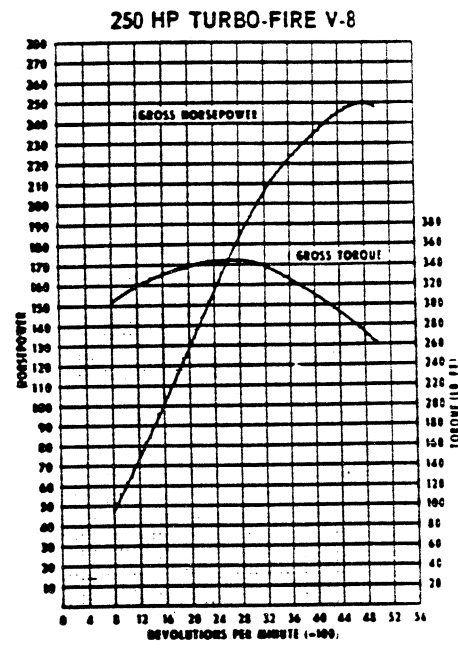
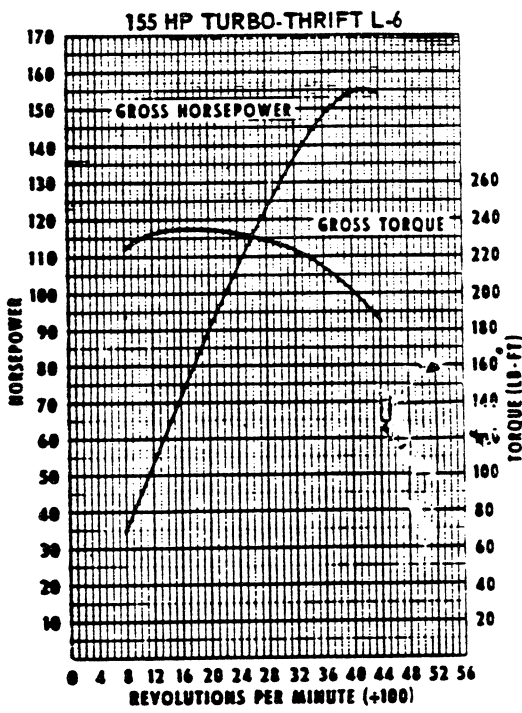
POWERGLIDE

Performance Weight (pounds)	3919	4026	4073	4079			
Pounds per Gross Horsepower	25.28	20.13	16.29	13.46			
Pounds per Cu.In. Displacement	15.68	13.08	11.61	11.63			
Gross HP per Cu.In. Displacement	.620	.651	.714	.857			
Power Displacement (cu.ft./mile)	178.22	215.59	217.85	217.85			
Displacement Factor (cu.ft./ton mile)	90.94	107.26	106.79	106.79			

GLOSSARY

Performance Weight	Curb Weight plus 600 Lb (weight of four 150 lb passengers)
Power Displacement	$\frac{\text{Crankshaft Revs/Mi} \times \text{Piston Displacement}}{2 \times 1728}$
Displacement Factor	$\frac{\text{Power Displacement}}{\text{Performance Wt (tons)}}$

ENGINE OUTPUT CURVES



The engine output curves represent full throttle performance is obtained from dynamometer test data corrected to standard barometric pressure 29.92 inches of mercury and standard temperature of 60 degrees F.

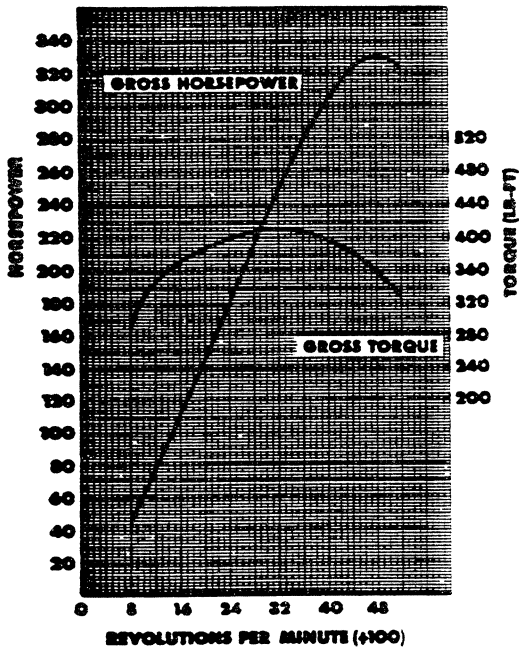
GROSS POWER and TORQUE were obtained in a regular dynamometer test with the dynamometer exhaust system,

no fan, generator not charging, optimum spark advance, and optimum fuel setting.

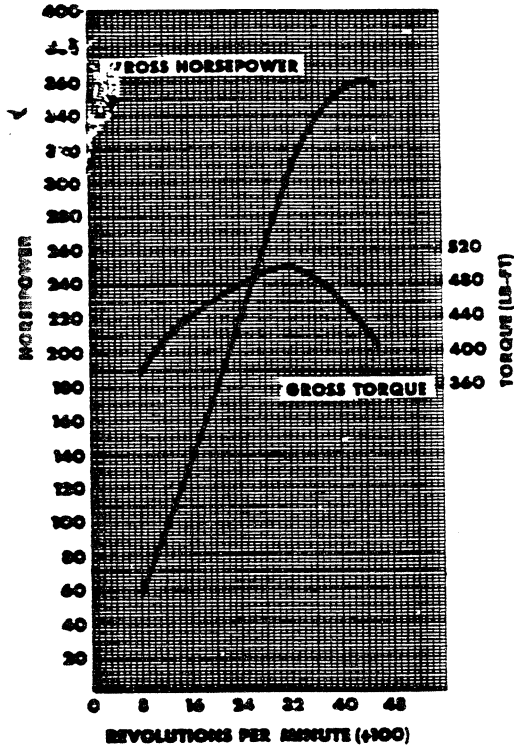
NET POWER and TORQUE were obtained from a dynamometer test simulating actual operating conditions when the engine is in its vehicle, except the generator is not charging.

ENGINE OUTPUT CURVES

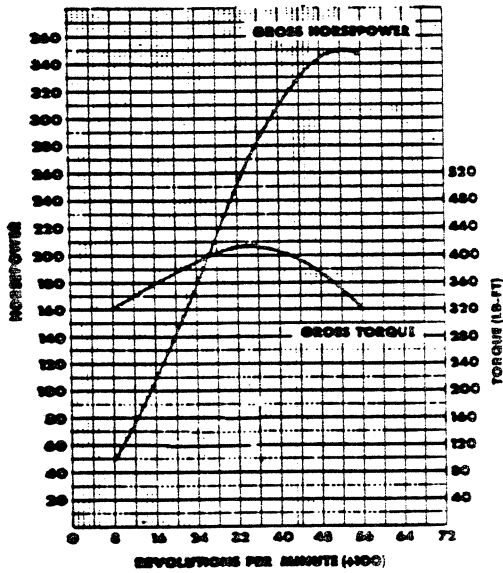
● 330 HP TURBO-JET V-8



● 360 HP TURBO-JET V-8



350 HP TURBO-JET V-8



The engine output curves represent full throttle performance as obtained from dynamometer test data corrected to standard barometric pressure 29.92 inches of mercury and standard temperature of 60 degrees F.

GROSS POWER and TORQUE were obtained in a regular dynamometer test with the dynamometer exhaust system,

no fan, generator not charging, optimum spark advance, and optimum fuel setting.

NET POWER and TORQUE were obtained from a dynamometer test simulating actual operating conditions when the engine is in its vehicle, except the generator is not charging.

PRINCIPAL COMPONENTS

CYLINDER BLOCK

Material	Cast alloy iron
Bore Diameter	
L6-250 Cu.In.	3.8745-3.8775
V8-307 Cu.In.	3.8745-3.8775
V8-350 Cu.In.	3.9995-4.0025
V8-402 Cu.In.	4.1246-4.1274
V8-454 Cu.In.	4.2496-4.2524
No. of Bulkheads	
L6	7
V8	5
Water Jacket	Pull length around each cylinder
Cylinder Head Mounting Arrangement:	
L6	1-2-3-4-5-6
V8	Left bank 1-3-5-7 Right bank 2-4-6-8
Bore Spacing (Centerline to Centerline)	
L6-250 Cu.In.	4.4
V8-307 & 350 Cu.In.	4.4
V8-402 & 454 Cu.In.	4.84

CYLINDER HEAD

Material	High chrome cast alloy iron
Bolt No. & Size	
L6-250 Cu.In.	10; .500 dia. 13 threads/in.
V8-307 & 350 Cu.In.	34; .4375 dia. 14 threads/in.
V8-402 & 454 Cu.In.	32; .4375 dia. 14 threads/in.

COMBUSTION CHAMBER VOLUME

(Total chamber volume of assembled engine with piston at top center)	
L6-250 Cu.In.	5.73 Cu.In.
V8-307 Cu.In.	5.02 Cu.In.
V8-350 Cu.In. (RPO L65)	5.62 Cu.In.
V8-350 Cu.In. (RPO L48)	4.83 Cu.In.
V8-402 Cu.In.	5.70 Cu.In.
V8-454 Cu.In.	6.31 Cu.In.

INLET MANIFOLD

Material	Cast alloy iron
Type	
L6 engine	3 port, rectangular section
V8 engines	8 port, double deck

EXHAUST MANIFOLD

Material	Cast alloy iron
Type	
L6-250 Cu.In.	4 port, center downtake
V8-307 & 350 Cu.In.	Dual, 4 port, rear downtake
V8-402 & 454 Cu.In.	Dual, 4 port, rear downtake
Outlet Diameter	
L6-250, V8-307 & 350 Cu.In.	2.0
V8-402 & 454 Cu.In.	2.5

CRANKSHAFT

Material	
L6-250 Cu.In.	Cast nodular iron
V8-307 & 350 Cu.In.	Cast nodular iron
V8-402 Cu.In. (RPO LS3)	Nodular iron
V8-402 (RPO L34) & 454 Cu.In.	Forged steel
End Play	
L6-250 Cu.In.	.002-.006
V8-307 & 350 Cu.In.	.002-.006
V8-402 & 454 Cu.In.	.006-.010
Counter Weights	
L6-250 Cu.In.	12
V8-307, 350, 402 & 454 Cu.In.	6
Crank Arm Length	
L6-250 Cu.In.	1.765
V8-307 Cu.In.	1.625
V8-350 Cu.In.	1.74
V8-402 & 454 Cu.In.	1.88
V8-454 Cu.In.	2.00
Torsional Damper	Rubber mounted inertia
Timing Gear	
L6	Steel; helical cut
V8	Steel; sprocket & chain
Pulley Pitch Diameter	6.64

MAIN BEARINGS

Material	Steel backed insert; (copper lead alloy or premium aluminum lining selected for specific engine application)
Type	Precision removable
Thrust Against Bearing No.	L6-No. 7; V8-No. 5
Clearance	
L6-250 Cu.In.	.0003-.0029
V8-307 & 350 Cu.In. (No. 1)	.0008-.0020;
(No. 2-3-4)	.0011-.0023; (No. 5) .0017-.0033
V8-402 & 454 Cu.In. (No. 1)	.0007-.0019
(No. 2-3-4)	.0013-.0025; (No. 5) .0019-.0035

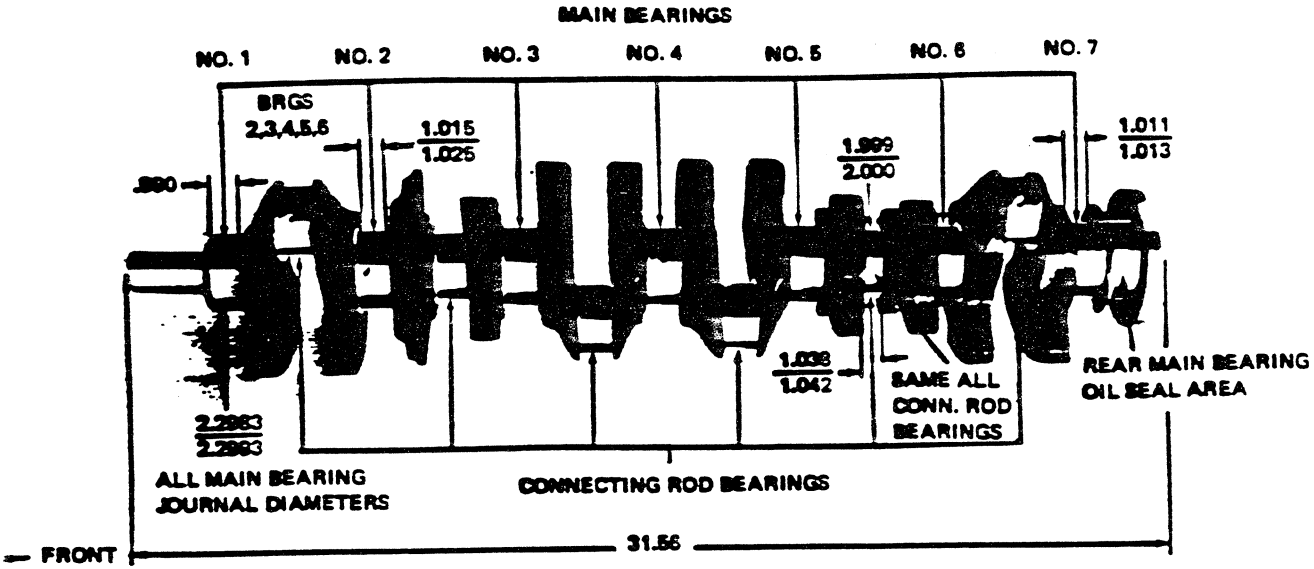
Dimensions

	Theoretical Inner Dia.	Effective Length	Projected Area
L6-250 Cu.In.			
Bearing No. 1-6	2.3004	.752	1.7299
Bearing No. 7	2.3004	.760	1.7483
V8-307 & 350 Cu.In.			
Bearing No. 1	2.4502	.752	1.8425
Bearing No. 2-4	2.4505	.752	1.8428
Bearing No. 5	2.4508	1.177	2.8846
V8-402 & 454 Cu.In.			
Bearing No. 1	2.7509	.992	2.7289
Bearing No. 2	2.7510	.992	2.7290
Bearing No. 3 & 4	2.7505	.992	2.7285
Bearing No. 5	2.7510	1.2525	3.4456
V8-454 Cu.In.			
Bearing No. 1	2.7503	.992	2.7283
Bearing No. 2, 3 & 4	2.7505	.992	2.7285
Bearing No. 5	2.7510	1.252	3.4457

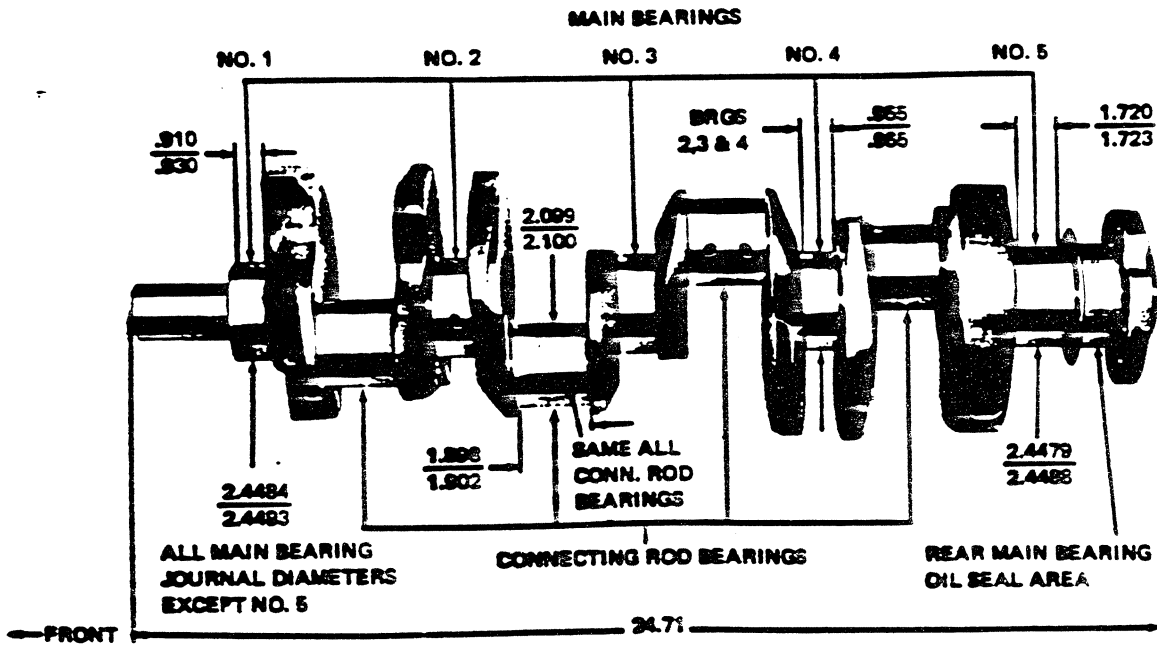
PRINCIPAL COMPONENTS

CRANKSHAFTS AND BEARINGS

250 CUBIC INCH SIX CYLINDER ENGINE



307 and 350 CUBIC INCH V-8 ENGINES



CAMSHAFT

Material Cast alloy iron
 Drive
 L6 Gear; bakelite and fabric composition
 V8 Sprocket & chain; steel
 Lobe Lift
 L6-250 Cu.In.2217 Inlet & Exhaust
 V8-307 & 350 Cu.In. . . .2600 Inlet; .2733 Exhaust
 V8-402 Cu.In. (RPO LS3) . . .2343 Inlet & Exhaust
 V8-402 Cu.In. (RPO L34) .2714 Inlet; .2824 Exhaust
 V8-454 Cu.In.2714 Inlet; .2824 Exhaust
 Camshaft Bearings Steel backed babbit

VALVE TRAIN

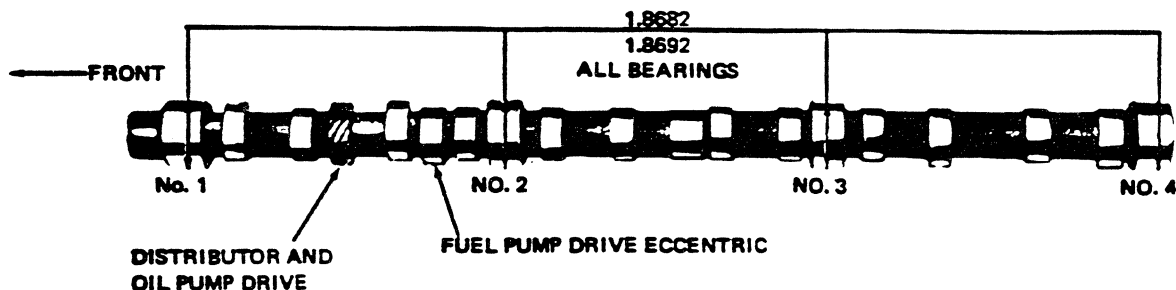
Type Individually mounted, overhead
 rocker arms, push rod actuated
 Lifters Hydraulic
 Rocker Arms Stamped steel
 Ratio
 L6-250 Cu.In. 1.75:1
 V8-307 & 350 Cu.In. 1.50:1
 V8-402 & 454 Cu.In. 1.70:1
 Push Rods
 Type Hollow steel
 Ends
 L6, V8-307 & 350 Cu.In. Hardened
 V8-402 & 454 Cu.In. Hardened steel inserts

VALVE SPRINGS

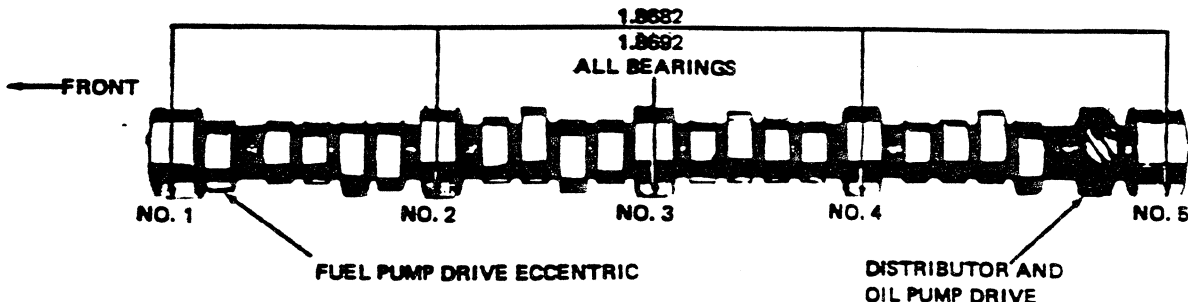
Diameter
 L6-250 Cu.In.872-.888
 V8-307 & 350 Cu.In.868-.884
 V8-402 & 454 Cu.In. 1.080-1.094
 Installed Length (lb. @ in.)
 Valves closed
 L6-250 Cu.In. 56-64 @ 1.66
 V8-307 & 350 Cu.In. 76-84 @ 1.70
 V8-402 & 454 Cu.In.
 Outer spring 69-81 @ 1.88
 Inner spring 26-34 @ 1.78
 Valves opened
 L6-250 Cu.In. 180-192 @ 1.27
 V8-307 & 350 Cu.In. 194-206 @ 1.25
 V8-402 & 454 Cu. In.
 Outer spring 228-252 @ 1.38
 Inner spring 81-99 @ 1.28
 Free Length
 L6-250 Cu.In. 1.90
 V8-307 & 350 Cu.In. 2.03
 V8-402 & 454 Cu. In.
 Outer spring 2.12
 Inner spring 2.06
 Valve Spring Damper
 L6-250 Cu.In. None
 V8-307 & 350 Cu.In. Flat steel, 4 coils

CAMSHAFT AND BEARINGS

250 CUBIC INCH L-6 ENGINE



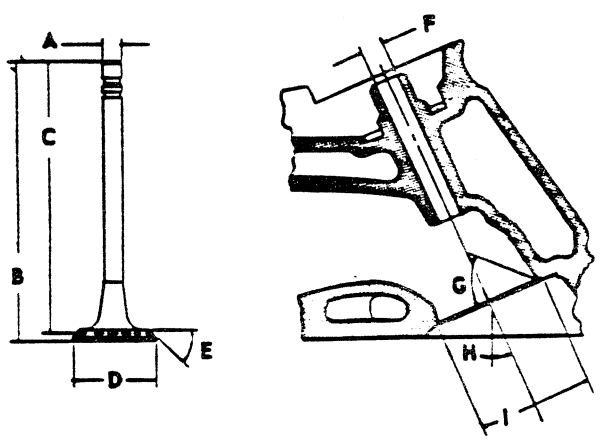
307 and 350 CUBIC INCH V-8 ENGINES



PRINCIPAL COMPONENTS

INLET VALVES

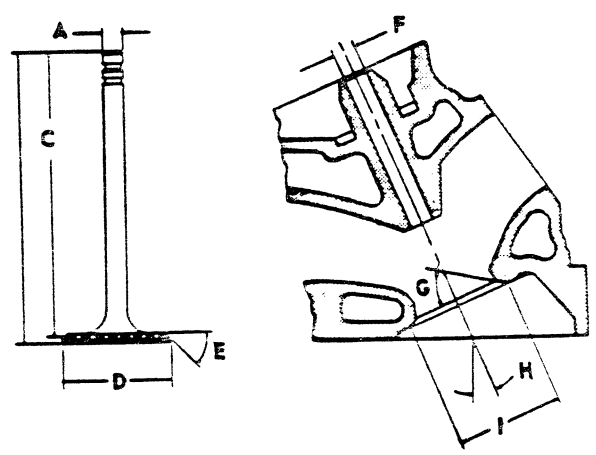
Material	Alloy steel
Coating	
L6-250 Cu. In.	Aluminized face
V8-307 & 350 Cu. In.	None
V8-402 & 454 Cu. In.	Face and head aluminized
Valve Guide Inserts (V8-402 & 454)	Cast alloy iron



A - Stem Diameter	
L6-250 Cu. In.	.3410-.3417
V8-307 & 350 Cu. In.	.3410-.3417
V8-402 & 454 Cu. In.	.3715-.3722
B - Overall Length	
L6-250 Cu. In.	4.902-4.922
V8-307 Cu. In.	4.902-4.922
V8-350 Cu. In.	4.870-4.889
V8-402 & 454 Cu. In.	5.215-5.235
C - Gage Length	
L6-250 Cu. In.	4.785-4.795
V8-307 & 350 Cu. In.	4.785-4.795
V8-402 & 454 Cu. In.	5.115-5.125
D - Overall Head Diameter	
L6-250 Cu. In.	1.715-1.725
V8-307 Cu. In.	1.715-1.725
V8-350 Cu. In.	1.935-1.945
V8-402 & 454 Cu. In.	2.060-2.070
E - Angle of Face	45°
F - Guide Diameter	
L6-250 Cu. In.	.3427-.3437
V8-307 & 350 Cu. In.	.3427-.3437
V8-402 & 454 Cu. In.	.3732-.3742
G - Angle of Seat	46°
H - Valve Angle	
L6-250 Cu. In.	9°
V8-307 & 350 Cu. In.	23°
V8-402 & 454 Cu. In.	4°
I - Valve Seat (cutter) Diameter	
L6-250 Cu. In.	1.770-1.790
V8-307 Cu. In.	1.770-1.790
V8-350 Cu. In.	1.990-2.010
V8-402 & 454 Cu. In.	2.150

EXHAUST VALVES

Material	High alloy steel
Coating	
L6-250 Cu. In.	Aluminized face
V8-307 & 350 Cu. In.	Aluminized face
V8-402 & 454 Cu. In.	Face and head aluminized
Valve Guide Inserts (V8-402 & 454)	Cast alloy iron



A - Stem Diameter	
L6-250 Cu. In.	.3410-.3417
V8-307 & 350 Cu. In.	.3410-.3417
V8-402 & 454 Cu. In.	.3713-.3720
B - Overall Length	
L6-250 Cu. In.	4.913-4.933
V8-307 & 350 Cu. In.	4.913-4.933
V8-402 Cu. In.	5.345-5.365
V8-454 Cu. In.	5.345-5.365
C - Gage Length	
L6-250 Cu. In.	4.781-4.791
V8-307 & 350 Cu. In.	4.781-4.791
V8-402 & 454 Cu. In.	5.235-5.245
D - Overall Head Diameter	
L6-250 Cu. In.	1.495-1.505
V8-307 & 350 Cu. In.	1.495-1.505
V8-402 Cu. In.	1.715-1.725
V8-454 Cu. In.	1.715-1.725
E - Angle of Face	45°
F - Guide Diameter	
L6-250 Cu. In.	.3427-.3437
V8-307 & 350 Cu. In.	.3427-.3437
V8-402 & 454 Cu. In.	.3732-.3742
G - Angle of Seat	46°
H - Valve Angle	
L6-250 Cu. In.	9°
V8-307 & 350 Cu. In.	23°
V8-402 & 454 Cu. In.	4°
I - Valve Seat (cutter) Diameter	
L6-250 Cu. In.	1.550-1.570
V8-307 & 350 Cu. In.	1.550-1.570
V8-402 Cu. In.	1.625
V8-454 Cu. In.	1.625

PRINCIPAL COMPONENTS

VALVE LIFT

L6-250 Cu. In.	3880 Inlet & Exhaust
V8-307 & 350 Cu. In.	3900 Inlet; 4100 Exhaust
V8-402 Cu. In. (RPO LS3)	3983 Inlet & Exhaust
V8-402 Cu. In. (RPO L34) .	4614 Inlet; 4800 Exhaust
V8-454 Cu. In.	4614 Inlet; 4800 Exhaust

VALVE TIMING (Crankshaft degrees)

	Excluding Ramps	Including Ramps
L6-250 Cu. In.		
Inlet Valve (Zero lash)		
Opens - BTC	16°	62°
Closes - ABC	48°	94°
Duration	244°	336°
Exhaust Valve (Zero lash)		
Opens - BBC	46°30'	92°30'
Closes - ATC	17°30'	63°30'
Duration	244°	336°
V8-307 & 350 Cu. In.		
Inlet Valve (Zero lash)		
Opens - BTC	28°	38°
Closes - ABC	72°	92°
Duration	280°	310°
Exhaust Valve (Zero lash)		
Opens - BBC	78°	88°
Closes - ATC	30°	52°
Duration	288°	320°
V8-402 Cu. In. (RPO LS3)		
Inlet Valve (Zero lash)		
Opens - BTC	28°	40°
Closes - ABC	78°	102°
Duration	286°	322°
Exhaust Valve (Zero lash)		
Opens - BBC	75°	87°
Closes - ATC	31°	55°
Duration	286°	322°
V8-402 (RPO L34) & 454 Cu. In.		
Inlet Valve (Zero lash)		
Opens - BTC		56°
Closes - ABC		114°
Duration		350°
Exhaust Valve (Zero lash)		
Opens - BBC		110°
Closes - ATC		62°
Duration		352°

PISTONS

Material	Cast aluminum alloy
Head Type	
L6-250 Cu. In.	Flat, notched
V8-307 Cu. In.	Flat, notched
V8-402 & 454 Cu. In.	Domed head, valve cutout
Skirt Type	
Slipper	
Top Land Clearance	
L6-250 Cu. In.0245-.0335
V8-307 Cu. In.0235-.0325
V8-350 Cu. In.0235-.0325
V8-402 & 454 Cu. In.0306-.0374
Skirt Clearance	
L6-250 Cu. In.0005-.0011
V8-307 Cu. In.0005-.0011
V8-350 Cu. In.0007-.0013
V8-402 Cu. In.0018-.0026
V8-454 Cu. In.0020-.0028
Compression Ring Groove Depth	
L6-250 Cu. In.2153-.2218
V8-307 Cu. In.2113-.2178
V8-350 Cu. In.2218-.2284
V8-402 Cu. In.2328-.2392
V8-454 Cu. In.2348-.2412
Oil Ring Groove Depth	
L6-250 Cu. In.2093-.2158
V8-307 Cu. In.2053-.2118
V8-350 Cu. In.2038-.2103
V8-402 & 454 Cu. In.2183-.2247
Pin Bore Offset	
.055-.065	
Compression Height	
L6-250 Cu. In.	1.658-1.662
V8-307 Cu. In.	1.673-1.677
V8-350 Cu. In.	1.558-1.562
V8-402 Cu. In.	1.940-1.944
V8-454 Cu. In.	1.691-1.699

PISTON PINS

Material	Chromium steel
Length	
L6-250 Cu. In.	2.990-3.010
V8-307 & 350 Cu. In.	2.990-3.010
V8-402 & 454 Cu. In.	2.930-2.950
Diameter	
L6-250 Cu. In.9270-.9273
V8-307 & 350 Cu. In.9270-.9273
V8-402 & 454 Cu. In.9895-.9893
Clearance in Piston	
L6-250 Cu. In.00015-.00025
V8-307 & 350 Cu. In.00015-.00025
V8-402 Cu. In.00025-.00035
V8-454 Cu. In.00030-.00040

PRINCIPAL COMPONENTS

COMPRESSION RINGS - UPPER

Material	Cast alloy iron
Type	Straight edge inside of ring
Face	Barrel
Coating	
L6-250 Cu.In.	Chrome plate face
V8-307 & 350 Cu.In.	Chrome plate face
V8-402 & 454 Cu. In.	Molybdenum inlay
Width	
L6-250 Cu.In.	.0628-.0633
V8-307 & 350 Cu.In.	.0775-.0780
V8-402 Cu.In. i.	.0770-.0780
V8-454 Cu.In.	.0770-.0775
Wall Thickness	
L6-250 Cu.In.	.184-.196
V8-307 Cu.In.	.184-.194
V8-350 Cu.In.	.190-.200
V8-402 Cu. In.	.196-.206
V8-454 Cu.In.	.202-.212
©Gap	.010-.020

COMPRESSION RINGS - LOWER

Material	Cast alloy iron
Type	Inside bevel (top of ring 30 degrees to piston vertical axis for L6-250 & V8-350; 50 degrees for V8-396 & 400; 28-52 degrees for V8-454
Face	Tapered
Coating	
L6-250 Cu.In.	Wear resistant
V8-307 & 350 Cu.In.	Wear resistant
V8-402 & 454 Cu. In.	Chrome plated
Width	
L6-250 Cu.In.	.0623-.0633
V8-307 Cu.In.	.0770-.0780
V8-350 Cu.In.	.0770-.0775
V8-402 Cu. In.	.0770-.0780
V8-454 Cu.In.	.0770-.0775
Wall Thickness	
L6-250 Cu.In.	.184-.194
V8-307 Cu.In.	.184-.194
V8-350 Cu.In.	.190-.200
V8-402 Cu. In.	.196-.206
V8-454 Cu.In.	.202-.212
Gap	
L6-250 Cu.In.	.010-.020
V8-307 Cu.In.	.010-.020
V8-350 Cu.In.	.013-.025
V8-402 & 454 Cu. In.	.010-.020

OIL CONTROL RINGS

Type	Multi-piece (two rails and one spacer)
Material	
Rails	Steel
Spacer	Alloy steel
Width (assembled)	
L6-250 Cu.In.	.1870-.1890
V8-307 & 350 Cu.In.	.1870-.1890
V8-402 & 454 Cu.In.	.1870-.1890
Wall Thickness	
L6-250 Cu.In.	.152-.158
V8-307 & 350 Cu.In.	.150-.156
V8-402 & 454 Cu.In.	.137-.143
Gap	
L6-250 Cu.In.	.015-.055
V8-307 & 350 Cu.In.	.015-.055
V8-402 & 454 Cu.In.	.010-.030
Rail Coatings	Chrome plated

CONNECTING RODS

Material	Drop forged steel
Length (center to center)	
L6-250 Cu.In.	5.695-5.705
V8-307 & 350 Cu.In.	5.695-5.705
V8-402 & 454 Cu.In.	6.130-6.140

CONNECTING ROD BEARINGS

Material	
L6-250 & V8-307 Cu.In.	Copper lead alloy or sintered copper nickel backed babbitt on steel
V8-350 Cu.In.	Premium aluminum
V8-402 & 454 Cu.In.	Premium aluminum
Type	Precision removable
Clearance	
L6-250 Cu.In.	.0007-.0027
V8-307 & 350 Cu.In.	.0013-.0035
©V8-402 & 454 Cu.In.	.0009-.0025
Theoretical I.D.	
L6-250 Cu.In.	2.0017
V8-307 & 350 Cu.In.	2.1019
V8-396, 400 & 454 Cu.In.	2.2012
Effective Length	
L6-250 Cu.In.	.807
V8-307 & 350 Cu.In.	.797
V8-402 & 454 Cu.In.	.847
End Play	
L6-250 Cu.In.	.009-.014
V8-307 & 350 Cu.In.	.008-.014
V8-402 & 454 Cu.In.	.015-.023

FUEL TANK

Capacity (Gal)	
All models except S/Wags.	20 (approximately)
Station Wagons	18.5 (approximately)
Fuel Tank Location	Behind rear axle
Filler Location	
Station Wagons & El Camino	Left near quarter panel
Remaining Models	Behind hinged near license plate

FUEL FILTERS, DUAL

In Fuel Tank	Mesh strainer
In Carburetor Inlet	Paper (sintered bronze V8-307)

FUEL PUMP ASSEMBLY

Type	Mechanical; diaphragm
Drive	Camshaft, eccentric
Location	Right side front of engine
Pressure Range (shut off pressure at 1800 RPM)	
L6-250 Cu.In.	4.00-5.00 PSI at pump outlet
V8-307 Cu.In.	5.50-7.50 PSI at pump outlet
V8-350 & 396 Cu.In.	7.50-9.00 PSI at pump outlet
V8-400 & 454 Cu.In.	7.50-9.00 PSI at pump outlet

●AIR CLEANER

Type	
All engines except V8-402 Cu.In.(L34)	Cylindrical, single air horn
V8-402 Cu.In. (L34)	Full circle intake exposed element; chrome cover
Diameter	
L6-250 Cu.In.	12.62
V8-307 & 350 (L65) Cu.In.	12.62
V8-350 Cu.In. (L48)	15.48
V8-402 Cu.In. (L33)	15.48
V8-402 Cu.In. (L34)	14.16
V8-454 Cu.In.	15.48
Filter Element	Oil-wetted paper

CARBURETORS

Make and Type	
L6-250 Cu.In.	Rochester, 1-barrel, Monojet
V8-307 Cu.In.	Rochester, 2-bbl., downdraft
V8-350 Cu.In. (RPO L65)	Rochester, 3-bbl., downdraft
V8-350 Cu.In. (RPO L48)	Rochester, 4-bbl., Quadrajct
V8-396, 400 & 454 Cu.In.	Rochester, 4-bbl., Quadrajct

SAE Flange Type

L6-250 Cu.In.	1.50
V8-307 Cu.In.	1.25
V8-350 Cu.In.	1.50
V8-396 400 & 454 Cu.In.	1.50

Throttle Bore

L6-250 Cu.In.	1.69
V8-307 Cu.In.	1.44
V8-350 Cu.In. (RPO L65)	1.69
V8-350 Cu.In. (RPO L48)	

Primary	1.38
Secondary	2.25

V8-396 400 & 454 Cu.In.

Primary	1.38
Secondary	2.25

Secondary Throttle Actuation By
linkage approximately when primary valves
are opened halfway between closed and open

●Venturi Diameter

L6-250 Cu.In.	1.31
V8-307 Cu.In.	1.09
V8-350 Cu.In. (RPO L65)	1.25
V8-350 Cu.In. (RPO L48)	
Primary	1.04
Secondary625
V8-396, 400 & 454 Cu.In.	
Primary	1.04
Secondary625

CHOKE

Type	Automatic
----------------	-----------

EXHAUST AND VENTILATION SYSTEM

TYPE

L6-250 Cu.In.	Single
V8-307 & 350 Cu.In.	Single
	with crossover pipes
V8-402 & 454 Cu.In.	Dual
	with resonators

MUFFLERS

Type Oval, reverse flow
 Construction Heads and body joined
 by sealed lock seam construction

Head

L6-250 Cu.In.048 sheet steel, aluminized
V8-307 Cu.In.047 sheet steel, aluminized
V8-350 Cu.In.060 sheet steel, aluminized
V8-402 & 454 Cu.In.	
Left hand054 sheet steel, aluminized
Right hand060 stainless steel

Shell

L6-250 Cu.In.036 sheet steel, zinc coated
V8-307 Cu.In.035 sheet steel, zinc coated
V8-350 Cu.In.035 sheet steel, zinc coated
V8-402 & 454 Cu.In.	
Left hand036 sheet steel, zinc coated
Right hand036 stainless steel

Wrap030 indented asbestos sheet

Cover018 sheet steel, aluminized

Raffles

L6-250 Cu.In.	
No. 1 & 4048 sheet steel, zinc coated
No. 2 & 3036 sheet steel, zinc coated
V8-307 & 350 Cu.In.	
No. 1 & 4047 sheet steel, zinc coated
No. 2 & 3035 sheet steel, zinc coated
V8-402 & 454 Cu.In.	
Left hand	
No. 1 & 4048 sheet steel, zinc coated
No. 2 & 3036 sheet steel, zinc coated
Right hand	
No. 1, 2, 3 & 4036 stainless steel

Length, Body

L6-250 Cu.In. 21.62

V8-307, 350, 402 & 454 Cu.In. 21.25

Width (I.D.) 9.25

Height (I.D.) 5.00

EXHAUST CROSSOVER PIPE (V8-307 & 350 Cu.In.)

Dimensions (O.D.)	2.00
Wall Thickness072-.092 laminated

EXHAUST PIPE

Dimensions (O.D.)	
L6-250 Cu.In.	2.00
V8-307 Cu.In.	2.00
V8-350 Cu.In.	2.50
V8-402 & 454 Cu.In.	2.50
Wall Thickness	
L6-250 Cu.In.057-.071
V8-307 Cu.In.072-.092 laminated
V8-350 Cu.In.072-.092 laminated
V8-402 & 454 Cu.In.072-.092 laminated

RESONATORS (V8-402 & 454 Cu.In. only)

Type	Straight through
Cover042
Heads048

TAIL PIPES

Dimensions (O.D.)	
L6-250 Cu.In.	1.875
V8-307 & 350 Cu.In.	1.875
V8-402 & 454 Cu.In.	2.00
Wall Thickness062-.076

EXHAUST EMISSION CONTROLS

- Positive Crankcase Ventilation Utilizes manifold vacuum to draw off engine crankcase vapors through a metered PCV valve and ultimately to the intake system for engine return
- Controlled Combustion System Increases combustion efficiency through leaner carburetor adjustments and revises distributor calibration
- Transmission Controlled Spark Actually an expansion of the CCS system and basically retards engine spark advance by eliminating vacuum advance in all forward gears except Hi-gear.